

IFRD2 Polyclonal Antibody

Catalog number: 10649-1-AP

Size: 40 µg/150 µl

Source: Rabbit

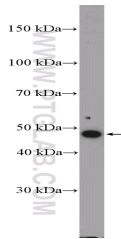
Isotype: IgG

Synonyms:

IFRD2; FLJ40446, IFNRP, IFRD2,

Protein SKMC15, SKMc15,

SM15



HeLa cells were subjected to SDS PAGE followed by western blot with 10649-1-AP (IFRD2 Antibody) at dilution of 1:600

Applications

Tested applications:	ELISA, WB
Species specificity:	Human; other species not tested.
Calculated IFRD2 MW:	48 kDa
Observed IFRD2 MW:	50 kDa
Positive WB detected in	HeLa cells, A549 cells, PC-3 cells
Recommended dilution:	WB: 1:200-1:2000

Application key: WB = Western blotting, IHC = Immunohistochemistry, IF = Immunofluorescence, IP = Immunoprecipitation

Immunogen information

Immunogen:	Ag1021
GenBank accession number:	BC007265
Gene ID (NCBI):	7866
Full name:	Interferon-related developmental regulator 2

Product information

Purification method:	Antigen affinity purification
Storage:	PBS with 0.1% sodium azide and 50% glycerol pH 7.3. Store at -20°C.