

APC4 Polyclonal Antibody

Catalog number: 14129-1-AP

Size: 23 µg/150 µl

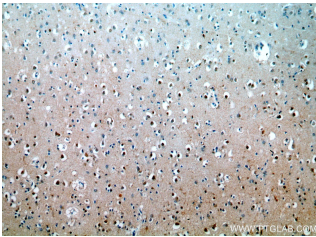
Source: Rabbit

Isotype: IgG

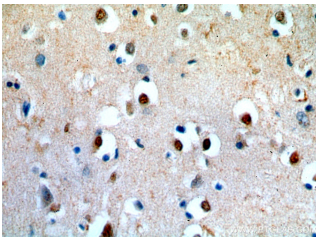
Synonyms:

ANAPC4; ANAPC4, APC4,

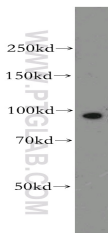
Cyclosome subunit 4



Immunohistochemical of paraffin-embedded human brain using 14129-1-AP (ANAPC4 antibody) at dilution of 1:50 (under 10x lens)



Immunohistochemical of paraffin-embedded human brain using 14129-1-AP (ANAPC4 antibody) at dilution of 1:50 (under 40x lens)



human brain tissue were subjected to SDS PAGE followed by western blot with 14129-1-AP (ANAPC4 antibody) at dilution of 1:500

Applications

Tested applications:	ELISA, WB, IHC
Species specificity:	Human, Mouse, Rat; other species not tested.
Calculated APC4 MW:	92 kDa
Observed APC4 MW:	92 kDa, 63 kDa
Positive WB detected in	Human brain tissue, HeLa cells, MCF7 cells
Positive IHC detected in	Human brain tissue
Recommended dilution:	WB: 1:500-1:5000 IHC: 1:20-1:200

Application key: WB = Western blotting, IHC = Immunohistochemistry, IF = Immunofluorescence, IP = Immunoprecipitation

Immunogen information

Immunogen:	Ag5225
GenBank accession number:	BC059383
Gene ID (NCBI):	29945
Full name:	Anaphase promoting complex subunit 4

Product information

Purification method:	Antigen affinity purification
Storage:	PBS with 0.02% sodium azide and 50% glycerol pH 7.3. Store at -20°C.