

TOB2 Polyclonal Antibody

Catalog number: 13607-1-AP

Size: 31 µg/150 µl

Source: Rabbit

Isotype: IgG

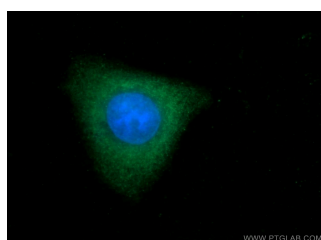
Synonyms:

TOB2; KIAA1663, Protein Tob2,

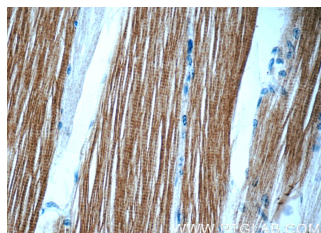
Protein Tob4, TOB2, TOB4,

TOBL, Transducer of erbB 2 2,

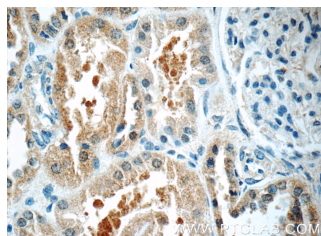
transducer of ERBB2, 2, TROB2



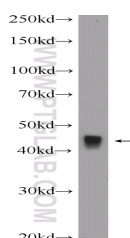
Immunofluorescent analysis of HepG2 cells using 13607-1-AP (TOB2 Antibody) at dilution of 1:25 and Alexa Fluor 488-conjugated AffiniPure Goat Anti-Rabbit IgG(H+L)



Immunohistochemistry of paraffin-embedded human skeletal muscle tissue slide using 13607-1-AP (TOB2 Antibody) at dilution of 1:50 (under 40x lens)



Immunohistochemistry of paraffin-embedded human kidney tissue slide using 13607-1-AP (TOB2 Antibody) at dilution of 1:100 (under 40x lens)



Applications

Tested applications:

ELISA, WB, IHC, IF

Species specificity:

Human, Mouse, Rat; other species not tested.

Calculated TOB2 MW:

344aa, 37 kDa

Observed TOB2 MW:

43 kDa

Positive WB detected in

Rat skeletal muscle tissue, mouse skeletal muscle tissue

Positive IHC detected in

Human skeletal muscle tissue, human kidney tissue

Positive IF detected in

HepG2 cells

Recommended dilution:

WB: 1:200-1:1000

IHC: 1:20-1:200

IF: 1:10-1:100

Application key: WB = Western blotting, IHC = Immunohistochemistry, IF = Immunofluorescence, IP = Immunoprecipitation

Immunogen information

Immunogen:

Ag4491

GenBank accession number:

BC038957

Gene ID (NCBI):

10766

Full name:

Transducer of ERBB2, 2

Product information

Purification method:

Antigen affinity purification

Storage:

PBS with 0.1% sodium azide and 50% glycerol pH 7.3. Store at -20°C.

rat skeletal muscle tissue were
subjected to SDS PAGE
followed by western blot with
13607-1-AP(TOB2 Antibody)
at dilution of 1:300