

LRRTM1 Polyclonal Antibody

Catalog number: 14288-1-AP

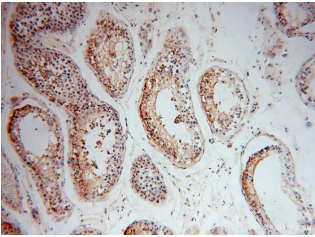
Size: 25 µg/150 µl

Source: Rabbit

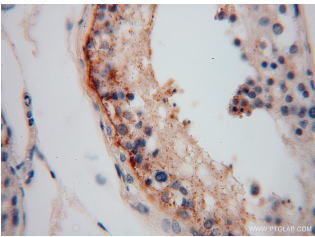
Isotype: IgG

Synonyms:

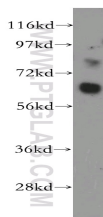
LRRTM1; FLJ32082, LRRTM1



Immunohistochemical of paraffin-embedded human testis using 14288-1-AP (LRRTM1 antibody) at dilution of 1:100 (under 10x lens)



Immunohistochemical of paraffin-embedded human testis using 14288-1-AP (LRRTM1 antibody) at dilution of 1:100 (under 40x lens)



HEK-293 cells were subjected to SDS PAGE followed by western blot with 14288-1-AP (LRRTM1 antibody) at dilution of 1:400

Applications

Tested applications:	ELISA, WB, IHC
Species specificity:	Human, Mouse, Rat; other species not tested.
Calculated LRRTM1 MW:	59 kDa
Observed LRRTM1 MW:	59kd
Positive WB detected in	HEK-293 cells, HeLa cells, mouse brain tissue
Positive IHC detected in	Human testis tissue, human brain tissue
Recommended dilution:	WB: 1:500-1:5000 IHC: 1:20-1:200

Application key: WB = Western blotting, IHC = Immunohistochemistry, IF = Immunofluorescence, IP = Immunoprecipitation

Immunogen information

Immunogen:	Ag5602
GenBank accession number:	BC045113
Gene ID (NCBI):	347730
Full name:	Leucine rich repeat transmembrane neuronal 1

Product information

Purification method:	Antigen affinity purification
Storage:	PBS with 0.02% sodium azide and 50% glycerol pH 7.3. Store at -20°C.