

RP2 Polyclonal Antibody

Catalog number: 14151-1-AP

Size: 31 µg/150 µl

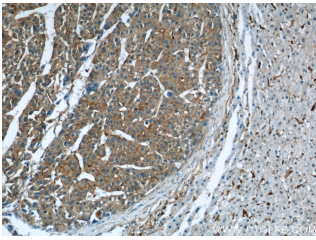
Source: Rabbit

Isotype: IgG

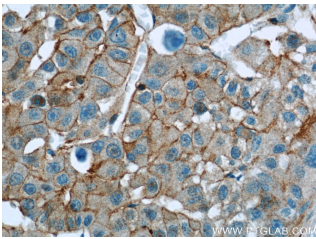
Synonyms:

RP2; DELXp11.3, KIAA0215,

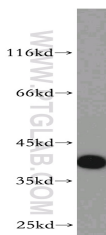
Protein XRP2, RP2, TBCCD2



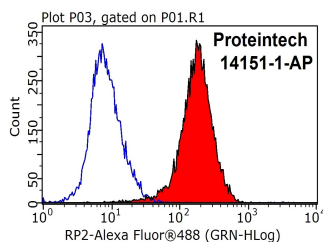
Immunohistochemical of paraffin-embedded human liver cancer using 14151-1-AP(RP2 antibody) at dilution of 1:50 (under 10x lens)



Immunohistochemical of paraffin-embedded human liver cancer using 14151-1-AP(RP2 antibody) at dilution of 1:50 (under 40x lens)



Jurkat cells were subjected to SDS PAGE followed by western blot with 14151-1-AP(RP2 antibody) at dilution of 1:500



1X10⁶ HeLa cells were stained with 0.2µg RP2 antibody (14151-1-AP, red)

Applications

Tested applications:	ELISA, WB, IHC, FC, IP
Species specificity:	Human, Mouse, Rat; other species not tested.
Calculated RP2 MW:	350aa, 40 kDa
Observed RP2 MW:	40-43 kDa
Positive WB detected in	Jurkat cells, HepG2 cells, mouse liver tissue, Y79 cells
Positive IP detected in	Y79 cells
Positive IHC detected in	Human liver cancer tissue
Positive FC detected in	HeLa cells
Recommended dilution:	WB: 1:500-1:5000
	IP: 1:200-1:2000
	IHC: 1:20-1:200
	FC: N/A

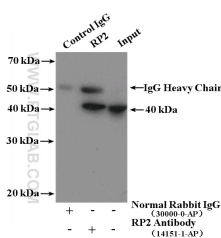
Application key: WB = Western blotting, IHC = Immunohistochemistry, IF = Immunofluorescence, IP = Immunoprecipitation

Immunogen information

Immunogen:	Ag5332
GenBank accession number:	BC043348
Gene ID (NCBI):	6102
Full name:	Retinitis pigmentosa 2 (X-linked recessive)

Product information

Purification method:	Antigen affinity purification
Storage:	PBS with 0.02% sodium azide and 50% glycerol pH 7.3. Store at -20°C.



IP Result of anti-RP2 (IP:14151-1-AP, 4µg; Detection:14151-1-AP 1:500)

and control antibody (blue). with Y79 cells lysate 2000ug.
Fixed with 90% MeOH
blocked with 3% BSA (30
min). Alexa Fluor 488-
conjugated AffiniPure Goat
Anti-Rabbit IgG(H+L) with
dilution 1:1000.