

FSCN3 Polyclonal Antibody

Catalog number: 13536-1-AP

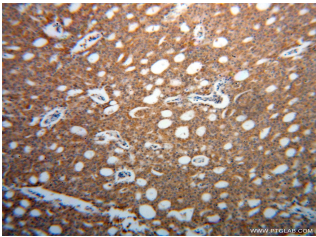
Size: 25 µg/150 µl

Source: Rabbit

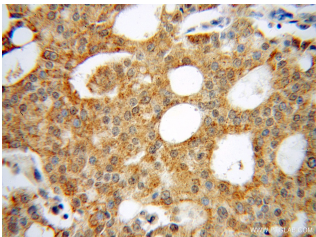
Isotype: IgG

Synonyms:

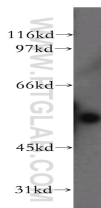
FSCN3; Fascin 3, FSCN3, Testis fascin



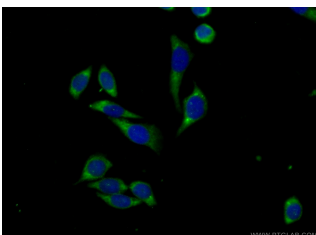
Immunohistochemical of paraffin-embedded human prostate cancer using 13536-1-AP (FSCN3 antibody) at dilution of 1:50 (under 10x lens)



Immunohistochemical of paraffin-embedded human prostate cancer using 13536-1-AP (FSCN3 antibody) at dilution of 1:50 (under 40x lens)



PC-3 cells were subjected to SDS PAGE followed by western blot with 13536-1-AP (FSCN3 antibody) at dilution of 1:800



Immunofluorescent analysis of (-20°C Ethanol) fixed PC-3 cells using 13536-1-AP (FSCN3

Applications

Tested applications:	ELISA, WB, IHC, IF
Species specificity:	Human, Mouse, Rat; other species not tested.
Calculated FSCN3 MW:	498aa, 57 kDa
Observed FSCN3 MW:	57 kDa
Positive WB detected in:	PC-3 cells
Positive IHC detected in:	Human prostate cancer tissue
Positive IF detected in:	PC-3 cells
Recommended dilution:	WB: 1:200-1:2000 IHC: 1:20-1:200 IF: 1:20-1:200

Application key: WB = Western blotting, IHC = Immunohistochemistry, IF = Immunofluorescence, IP = Immunoprecipitation

Immunogen information

Immunogen:	Ag4459
GenBank accession number:	BC035606
Gene ID (NCBI):	29999
Full name:	Fascin homolog 3, actin-bundling protein, testicular (Strongylocentrotus purpuratus)

Product information

Purification method:	Antigen affinity purification
Storage:	PBS with 0.02% sodium azide and 50% glycerol pH 7.3. Store at -20°C.

Antibody) at dilution of 1:50
and Alexa Fluor 488-
conjugated AffiniPure Goat
Anti-Rabbit IgG(H+L)