



LABCONCO CORPORATION 8811 Prospect Ave, Kansas City, MO 64132
(816) 333-8811 or (800) 821-5525 • (816) 363-0130 fax • labconco.com

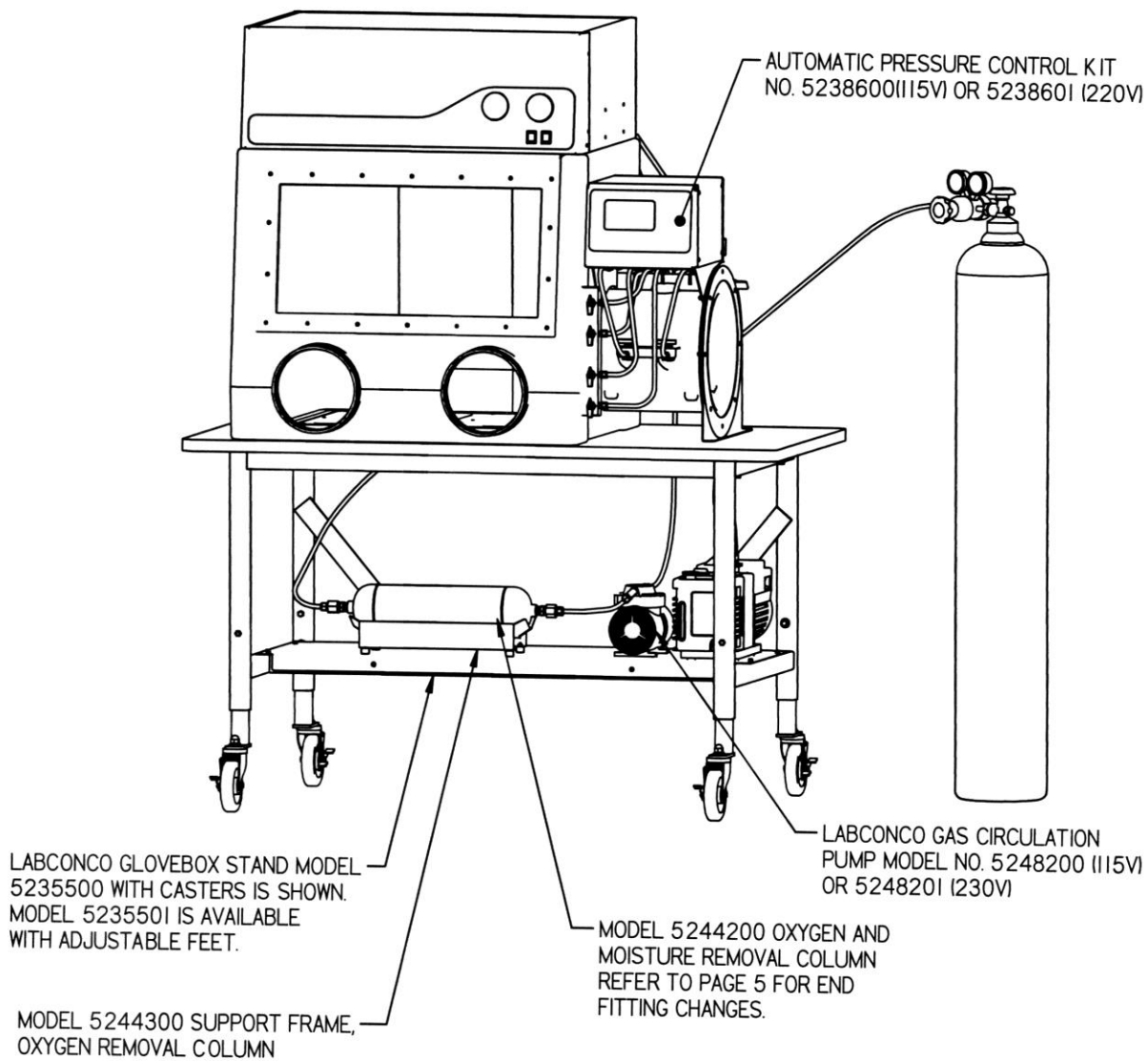
Oxygen and Moisture Drying Train Tubing Kit No. 5242501

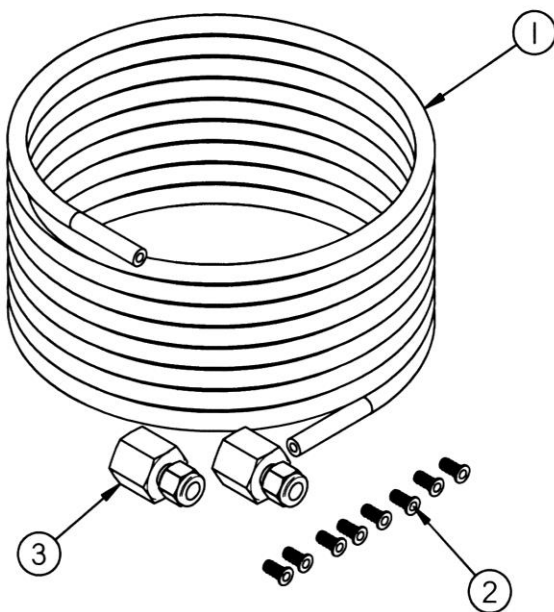
Operation

The Oxygen and Moisture Drying Train Tubing Kit contains all the tubing, tube inserts, and connectors necessary to connect the Oxygen and Moisture Removal Column and recirculating diaphragm pump to the main chamber of the glove box. The Oxygen and Moisture Removal Column and recirculating diaphragm pump are ordered separately with catalog numbers listed on the pictorials to follow. Follow the installation procedure below along with the pictorials to install all the tubing, tube inserts, and connectors.

Installation Procedure

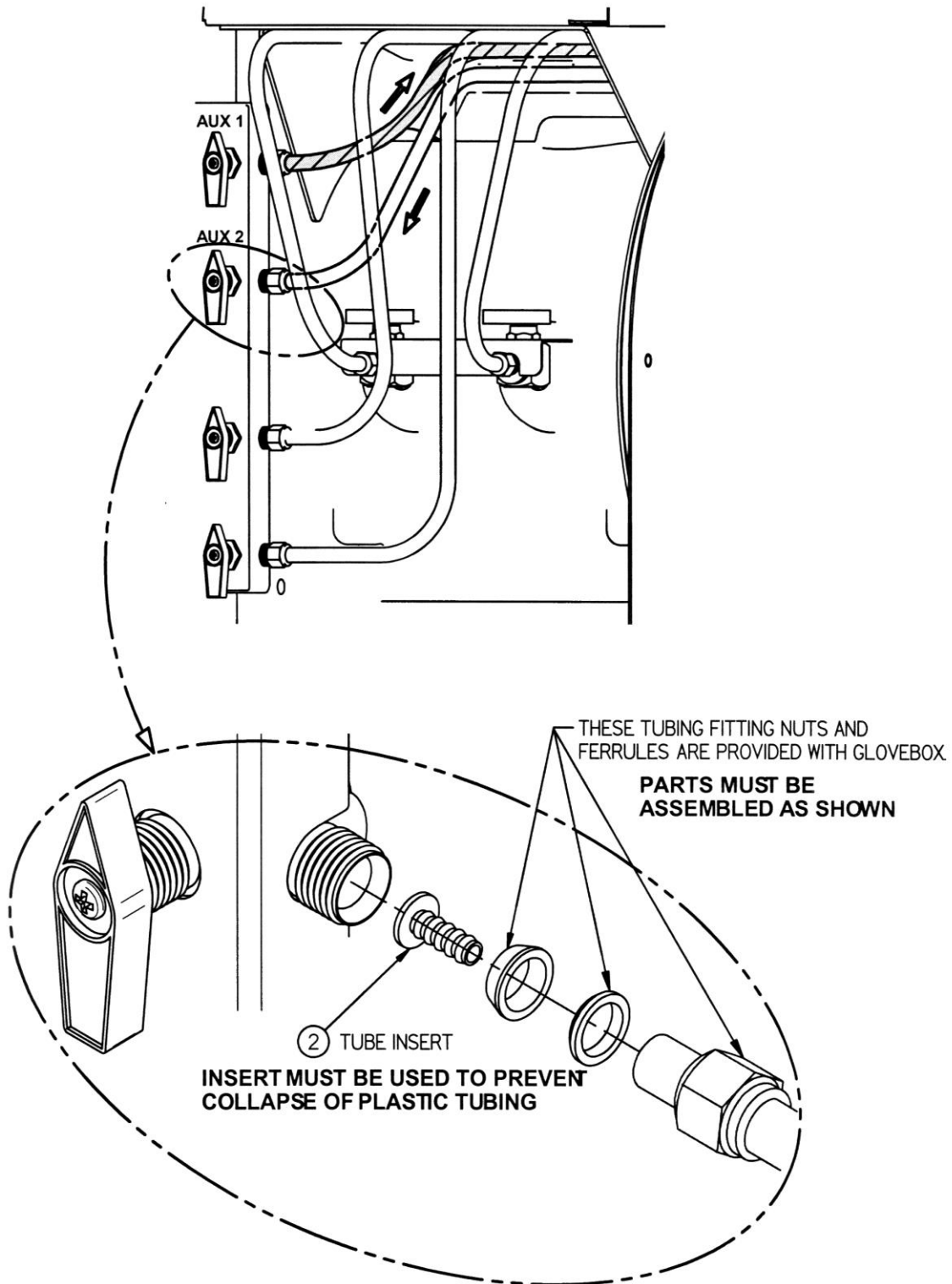
1. Review the diagrams and parts list attached before beginning installation.
2. The kit is supplied with 20' of 3/8" OD x 1/4" ID tubing. Plan accordingly and cut the tubing into one 2-foot (61 cm) length and two 9-foot (274 cm) lengths. Adjust the lengths depending on the location of the Oxygen and Moisture Removal Column and recirculating diaphragm pump.
3. Place tube inserts into both ends of all three tube lengths cut in step 2.
4. Insert one end of the long tube lengths into two of the four valves mounted on the glove box main chamber. Tighten the compression nuts 1-1/4 turns as illustrated on page 4.
5. Connect the other end of one of either long tube lengths to the inlet of the recirculating diaphragm pump and tighten the compression nut 1-1/4 turns.
6. Replace the end caps on the Oxygen and Moisture Removal Column with the two female pipe connectors. Apply PTFE tape to the female pipe connectors and tighten to the Oxygen and Moisture Removal Column.
7. Connect the remaining long tube length to the Oxygen and Moisture Removal Column and tighten the compression nut 1-1/4 turns.
8. Connect the 2-foot tube length between the exhaust of the recirculating diaphragm pump and the other end of the Oxygen and Moisture Removal Column and tighten the compression nuts 1-1/4 turns on both ends.
9. The tubing is now fully installed and installation is complete.
10. **Do not turn on the recirculating diaphragm pump until oxygen levels are below 0.3% or 3000 ppm through purging with inert gas.**





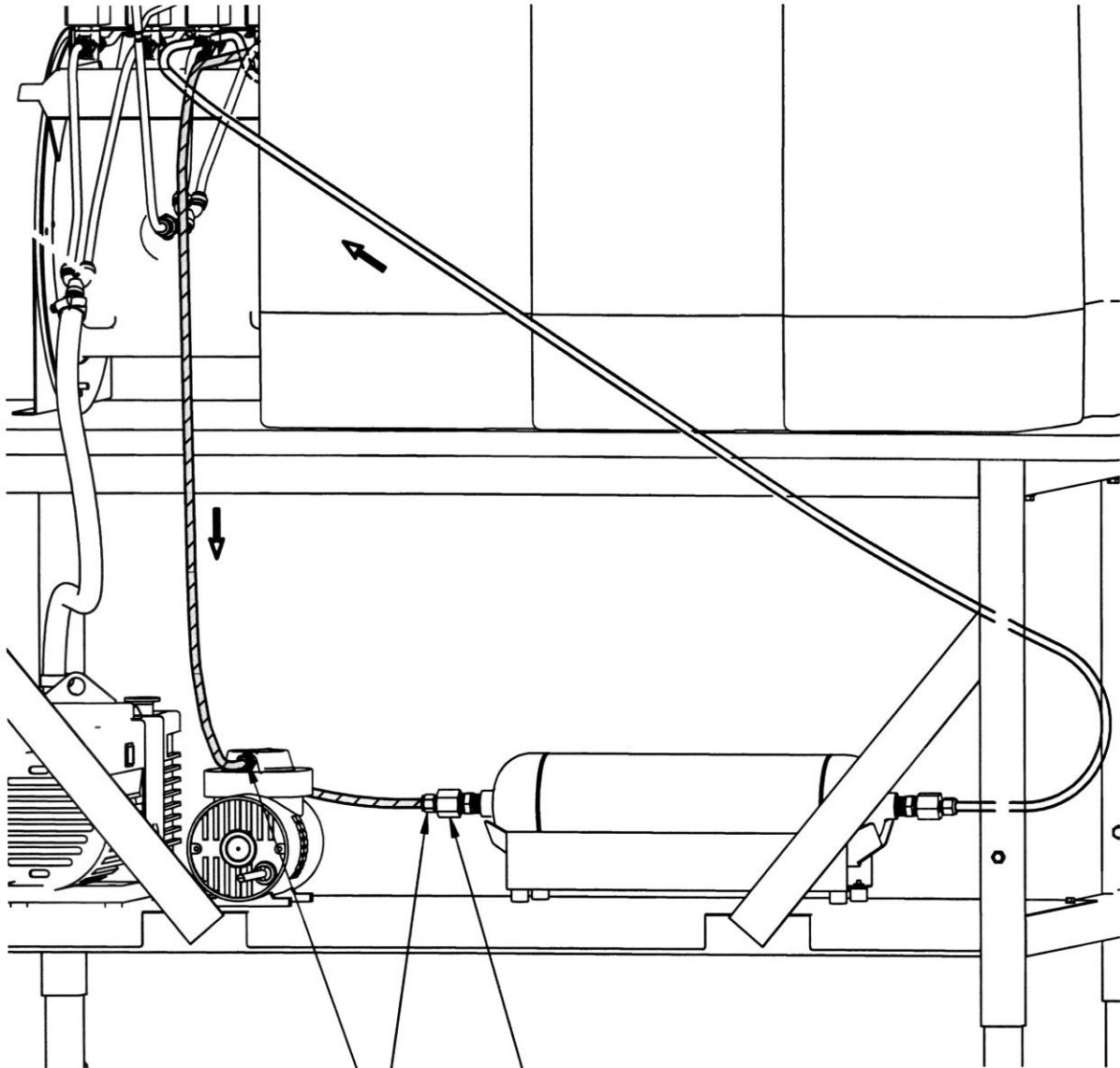
2	3	1409604	CONNECTOR, 3/8 TUBE TO 1/2 FEMALE PIPE
8	2	1409901	INSERT, TUBE - 3/8 TUBE OD X 1/4 ID
20 FT	1	7396209	TUBING, FEP - 3/8 OD X 1/4 ID
QTY.	ITEM	PART NO.	DESCRIPTION
PARTS LIST			

TUBING CONNECTIONS TO VALVES



ASSEMBLE PARTS ONTO TUBING AS SHOWN, INSERT INTO FITTING AND TIGHTEN NUT FINGER TIGHT, THEN TIGHTEN WITH A WRENCH ANOTHER 1 1/4 TURNS

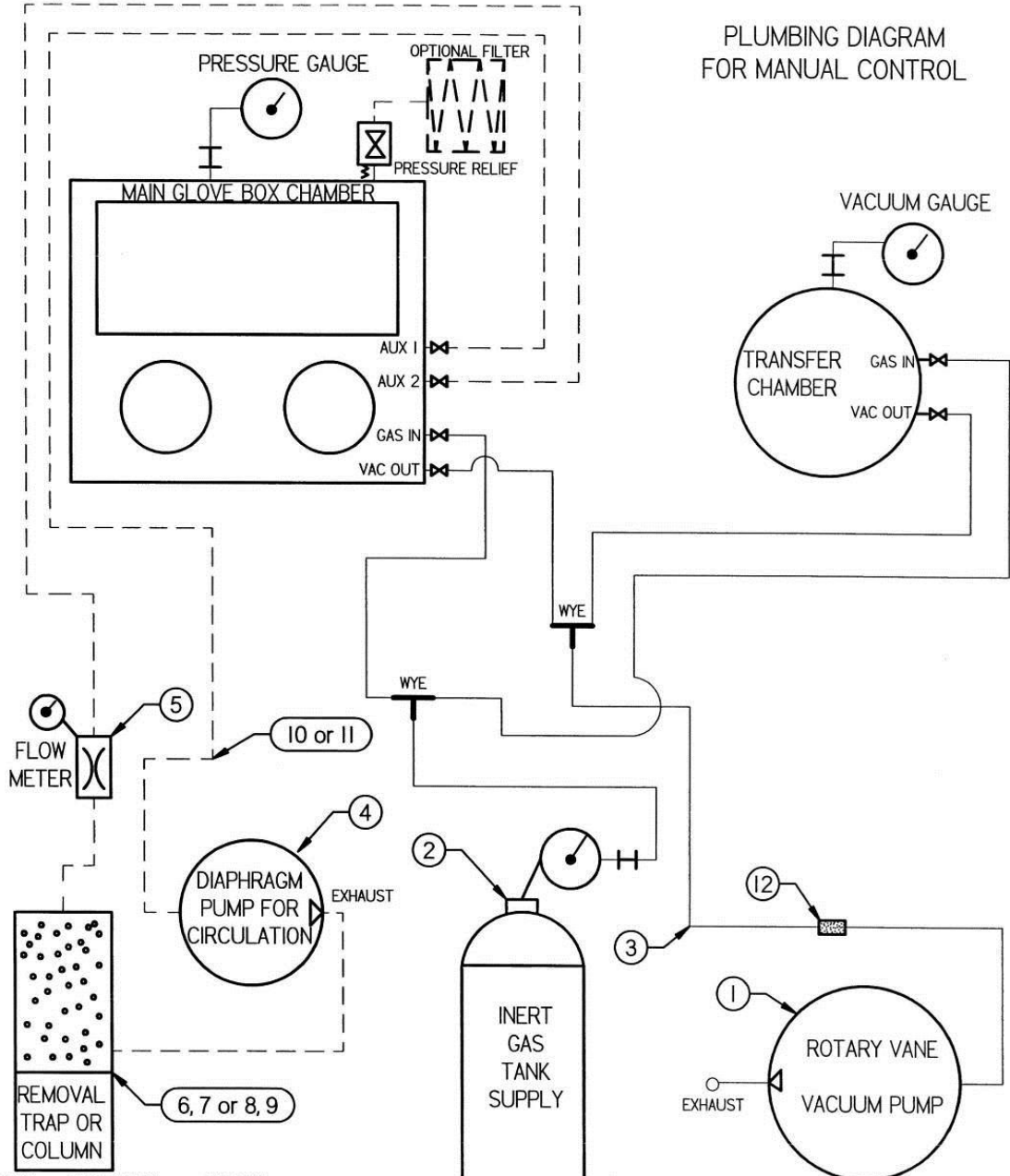
TUBING CONNECTIONS TO COLUMN AND PUMP



REFER TO PAGE 4 FOR PROPER
INSTALLATION OF FERRULES
AND TUBE INSERTS

REPLACE END CAPS WITH ITEM 3. SEAL THREADS
WITH PROPER SEALANT. SAVE END CAPS FOR
SEALING THE COLUMN WHEN RETURNING IT
FOR REGENERATION.

PLUMBING DIAGRAM
FOR MANUAL CONTROL



ITEM	DESCRIPTION	PART NO.
1	Rotary Vane Pump	I472100, 7739400, or 7739402
2	Inert Gas Tank & Reg.	Customer Supplied
3	Tubing Kit, Manual	5245100
4	Diaphragm Pump	5248200 or 5248201
5	Flowmeter	5244100
6	O2 & H2O Column	5244200

ITEM	DESCRIPTION	PART NO.
7	Stand, O2 & H2O	5244300
8	H2O Trap	7815200
9	H2O Canister W/Stand	7815301
10	O2 & H2O Tubing Kit	5242501
11	H2O Tubing Kit	5242500
12	0.2 Micron Filter Kit	5240100

