

## SYTL4 Polyclonal Antibody

Catalog number: 12128-1-AP

Size: 39 µg/150 µl

Source: Rabbit

Isotype: IgG

Synonyms:

SYTL4; DKFZp451P0116,

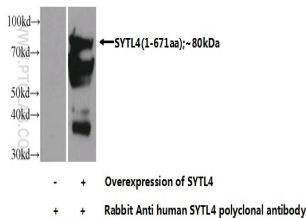
Exophilin 2, FLJ40960,

Granuphilin, SLP4,

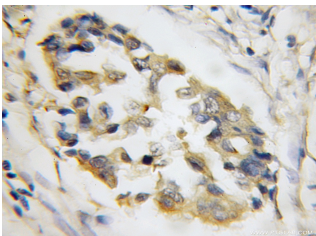
synaptotagmin like 4,

Synaptotagmin like protein 4,

SYTL4



Transfected HEK-293 cells were subjected to SDS PAGE followed by western blot with 12128-1-AP (SYTL4 Antibody) at dilution of 1:800



Immunohistochemical of paraffin-embedded human breast cancer using 12128-1-AP (SYTL4 antibody) at dilution of 1:50 (under 10x lens)

### Background

SYTL4, also known as SLP4 or granuphilin, is a member of the synaptotagmin-like protein (Slp) family. Members of this family are characterized by presence of an N-terminal Slp homology domain (SHD), which functions as a Rab27-binding domain, and C-terminal tandem C2 domains, putative Ca<sup>2+</sup>-binding motifs. SYTL4 is specifically expressed on dense-core granules in certain neuroendocrine cells and negatively controls dense-core vesicle exocytosis through specific interaction with Rab27A. (PMID: 16481396; 16473610)

### Applications

Tested applications:	ELISA, WB, IHC
Cited applications:	WB
Species specificity:	Human, Mouse, Rat; other species not tested.
Cited species:	Human
Calculated SYTL4 MW:	671aa, 76 kDa
Observed SYTL4 MW:	
Positive WB detected in	Transfected HEK-293 cells
Positive IHC detected in	Human breast cancer tissue
Recommended dilution:	WB: 1:200-1:2000 IHC: 1:20-1:200

Application key: WB = Western blotting, IHC = Immunohistochemistry, IF = Immunofluorescence, IP = Immunoprecipitation

### Immunogen information

Immunogen:	Ag2772
GenBank accession number:	BC014913
Gene ID (NCBI):	94121
Full name:	Synaptotagmin-like 4

### Product information

Purification method:	Antigen affinity purification
Storage:	PBS with 0.1% sodium azide and 50% glycerol pH 7.3. Store at -20°C.