

## MAPKSP1 Polyclonal Antibody

Catalog number: 11937-1-AP

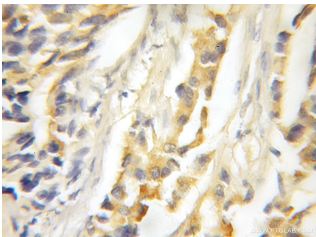
Size: 32 µg/150 µl

Source: Rabbit

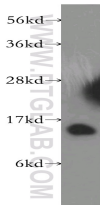
Isotype: IgG

Synonyms:

MAPKSP1; MAP2K1IP1,  
MAPBP, MAPK scaffold protein  
1, MAPKSP1, MEK binding  
partner 1, MP1



Immunohistochemical of paraffin-embedded human prostate cancer using 11937-1-AP (MAPKSP1 antibody) at dilution of 1:50 (under 10x lens)



human liver tissue were subjected to SDS PAGE followed by western blot with 11937-1-AP (MAPKSP1 antibody) at dilution of 1:500

### Applications

Tested applications:	ELISA, WB, IHC
Species specificity:	Human, Mouse, Rat; other species not tested.
Calculated MAPKSP1 MW:	124aa, 14 kDa
Observed MAPKSP1 MW:	14 kDa
Positive WB detected in	Human liver tissue, L02 cells, mouse brain tissue, mouse liver tissue
Positive IHC detected in	Human prostate cancer tissue, human heart tissue, human liver tissue
Recommended dilution:	WB: 1:500-1:5000 IHC: 1:20-1:200

Application key: WB = Western blotting, IHC = Immunohistochemistry, IF = Immunofluorescence, IP = Immunoprecipitation

### Immunogen information

Immunogen:	Ag2534
GenBank accession number:	BC026245
Gene ID (NCBI):	8649
Full name:	MAPK scaffold protein 1

### Product information

Purification method:	Antigen affinity purification
Storage:	PBS with 0.1% sodium azide and 50% glycerol pH 7.3. Store at -20°C.