

CDC27; APC3 Polyclonal Antibody

Catalog number: 10918-1-AP

Size: 20 µg/150 µl

Source: Rabbit

Isotype: IgG

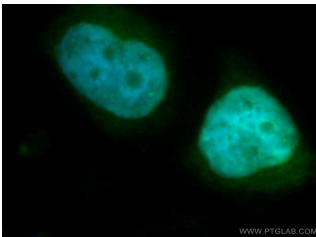
Synonyms:

CDC27; ANAPC3, APC3, CDC27,

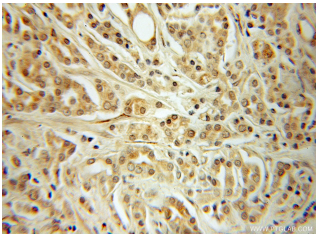
CDC27 homolog, CDC27Hs,

DOS1430E, D17S978E, H NUC,

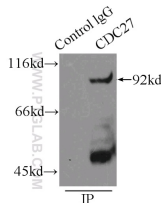
HNUC



Immunofluorescent analysis of SH-SY5Y cells, using CDC27 antibody 10918-1-AP at 1:50 dilution and FITC-labeled donkey anti-rabbit IgG (green). Blue pseudocolor = DAPI (fluorescent DNA dye).



Immunohistochemical of paraffin-embedded human prostate cancer using 10918-1-AP (CDC27; APC3 antibody) at dilution of 1:50 (under 10x lens)



IP Result of anti-CDC27; APC3 (IP:10918-1-AP, 3µg; Detection:10918-1-AP 1:600) with K-562 cells lysate 11000µg.

Background

CDC27/APC3 is a component of the anaphase-promoting complex (APC/cyclosome), which is composed of eight subunits and highly conserved in eukaryotic cells. The APC/cyclosome complex acts as a cell cycle-regulated E3 ubiquitin ligase which mediates ubiquitination and subsequent degradation of target proteins, and lead to the progression control through mitosis and the G1 phase of the cell cycle.

Applications

Tested applications:	ELISA, WB, IHC, IF, IP
Species specificity:	Human, Mouse, Rat; other species not tested.
Calculated CDC27; APC3 MW:	92kd
Observed CDC27; APC3 MW:	92kd
Positive WB detected in	K-562 cells, Jurkat cells
Positive IP detected in	K-562 cells
Positive IHC detected in	Human prostate cancer tissue
Positive IF detected in	SH-SY5Y cells
Recommended dilution:	WB: 1:300 - 1:1200
	IP: 1:300 - 1:1200
	IHC: 1:25 - 1:100
	IF: 1:25 - 1:100

Application key: WB = Western blotting, IHC = Immunohistochemistry, IF = Immunofluorescence, IP = Immunoprecipitation

Immunogen information

Immunogen:	Ag1345
GenBank accession number:	BC011656
Gene ID (NCBI):	996
Full name:	Cell division cycle 27 homolog (<i>S. cerevisiae</i>)

Product information

Purification method:	Antigen affinity purification
Storage:	PBS with 0.1% sodium azide and 50% glycerol pH 7.3. Store at -20°C.