

TMPRSS4 Polyclonal Antibody

Catalog number: 11283-1-AP

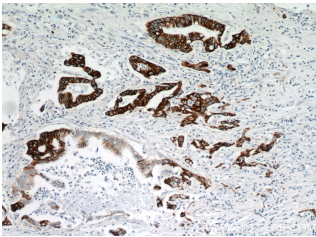
Size: 20 µg/150 µl

Source: Rabbit

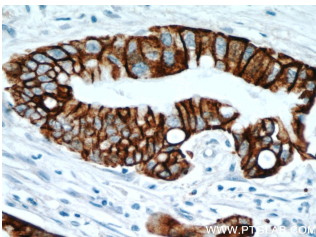
Isotype: IgG

Synonyms:

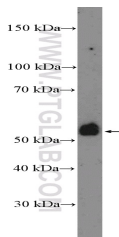
TMPRSS4; CAPH2, Channel activating protease 2, MT SP2, TMPRSS3, TMPRSS4



Immunohistochemical of paraffin-embedded human pancreas cancer using 11283-1-AP (TMPRSS4 antibody) at dilution of 1:50 (under 10x lens)



Immunohistochemical of paraffin-embedded human pancreas cancer using 11283-1-AP (TMPRSS4 antibody) at dilution of 1:50 (under 40x lens)



SW 1990 cells were subjected to SDS PAGE followed by western blot with 11283-1-AP (TMPRSS4 Antibody) at dilution of 1:1000

Background

TMPRSS4, also named as CAPH2 and MT-SP2, belongs to the peptidase S1 family. TMPRSS4 is a novel type II transmembrane serine protease that is highly expressed on the cell surface in pancreatic, thyroid and other cancer tissues. It promotes invasion, migration and metastasis of human tumor cells by facilitating an epithelial-mesenchymal transition (EMT) (PMID:20118200).

Applications

Tested applications:	ELISA, IHC, WB
Cited applications:	IF, IHC, WB
Species specificity:	Human, Rat; other species not tested.
Cited species:	Human, mouse
Calculated TMPRSS4 MW:	48 kDa
Observed TMPRSS4 MW:	55 kDa
Positive WB detected in	SW 1990 cells, BxPC-3 cells, mouse stomach tissue
Positive IHC detected in	Human pancreas cancer tissue, human colon cancer tissue, human colon tissue, human stomach cancer tissue
Recommended dilution:	WB: 1:500-1:5000 IHC: 1:20-1:200

Application key: WB = Western blotting, IHC = Immunohistochemistry, IF = Immunofluorescence, IP = Immunoprecipitation

Immunogen information

Immunogen:	Ag1804
GenBank accession number:	BC011703
Gene ID (NCBI):	56649
Full name:	Transmembrane protease, serine 4

Product information

Purification method:	Antigen affinity purification
Storage:	PBS with 0.1% sodium azide and 50% glycerol pH 7.3. Store at -20°C.