

## p70S6K Polyclonal Antibody

Catalog number: 14485-1-AP

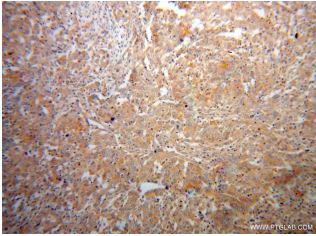
Size: 32 µg/150 µl

Source: Rabbit

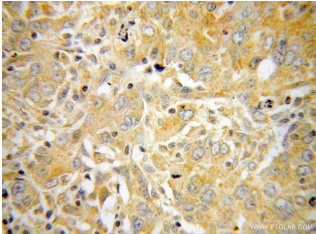
Isotype: IgG

Synonyms:

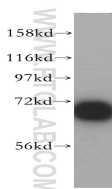
RPS6KB1; p70 alpha, p70 ribosomal S6 kinase alpha, p70 S6 kinase alpha, p70 S6K 1, p70 S6K alpha, p70 S6KA, p70(S6K) alpha, p70S6K, P70S6K1, PS6K, Ribosomal protein S6 kinase I, RPS6KB1, S6K, S6K beta 1, S6K1, STK14A



Immunohistochemical of paraffin-embedded human breast cancer using 14485-1-AP (p70(S6K) antibody) at dilution of 1:100 (under 10x lens)



Immunohistochemical of paraffin-embedded human breast cancer using 14485-1-AP (p70(S6K) antibody) at dilution of 1:100 (under 40x lens)



HeLa cells were subjected to SDS PAGE followed by western blot with 14485-1-AP (p70(S6K) antibody) at dilution of 1:1200

### Background

RPS6KB1 (Ribosomal protein S6 kinase beta-1) is also named as STK14A, p70 S6KA and belongs to the S6 kinase subfamily. RPS6KB1 is a major substrate of MTOR and acts as a crucial effector of MTOR signaling pathway and it plays a key role in cell growth and proliferation by regulating insulin sensitivity, metabolism, protein synthesis, and cell cycle. RPS6KB1 may play an important role in the progression of HCC and could serve as a potential molecular target for HCC therapy. (PMID:22684641). It has 2 isoforms produced by alternative initiation.

### Applications

Tested applications:	ELISA, WB, IHC, IF, IP, FC
Cited applications:	IHC, WB
Species specificity:	Human, Mouse, Rat; other species not tested.
Cited species:	Human
Calculated p70S6K MW:	59 kDa
Observed p70S6K MW:	70 kDa, 90 kDa
Positive WB detected in	HeLa cells, HepG2 cells, Jurkat cells, rat spleen tissue
Positive IP detected in	HeLa cells
Positive IHC detected in	Human breast cancer tissue
Positive IF detected in	HepG2 cells
Positive FC detected in	HepG2 cells
Recommended dilution:	WB: 1:500-1:5000 IP: 1:500-1:5000 IHC: 1:20-1:200 IF: 1:10-1:100 FC: N/A

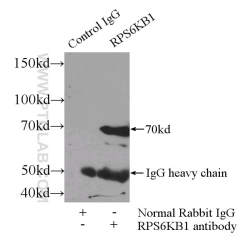
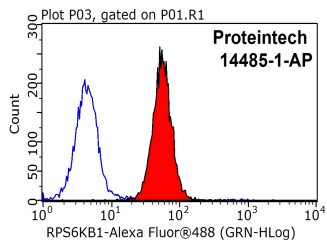
Application key: WB = Western blotting, IHC = Immunohistochemistry, IF = Immunofluorescence, IP = Immunoprecipitation

### Immunogen information

Immunogen:	Ag5883
GenBank accession number:	BC053365
Gene ID (NCBI):	6198
Full name:	Ribosomal protein S6 kinase, 70kDa, polypeptide 1

### Product information

Purification method:	Antigen affinity purification
Storage:	PBS with 0.02% sodium azide and 50% glycerol pH 7.3. Store at -20°C.



**1X10<sup>6</sup> HepG2 cells were stained with 0.2ug p70(S6K) antibody (14485-1-AP, red) and control antibody (blue). Fixed with 90% MeOH blocked with 3% BSA (30 min). Alexa Fluor 488-conjugated AffiniPure Goat Anti-Rabbit IgG(H+L) with dilution 1:1500.**

**Immunofluorescent analysis of HepG2 cells using 14485-1-AP ( p70(S6K) Antibody) at dilution of 1:25 and Rhodamine-Goat anti-Rabbit IgG**

**IP Result of anti-p70(S6K) (IP:14485-1-AP, 3ug; Detection:14485-1-AP 1:1000) with HeLa cells lysate 3000ug.**