

## NUDT6 Polyclonal Antibody

Catalog number: 11181-1-AP

Size: 45 µg/150 µl

Source: Rabbit

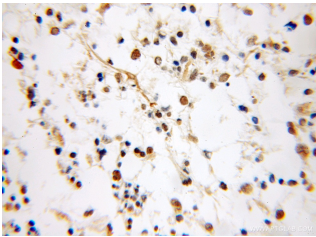
Isotype: IgG

Synonyms:

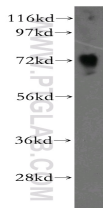
NUDT6; ASFGF2, FGF 2, FGF

AS, FGF2AS, gfg, gfg 1, Nudix

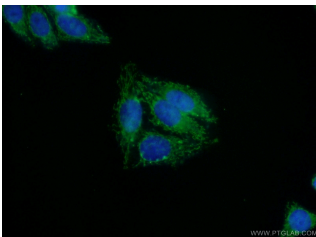
motif 6, NUDT6, Protein GFG



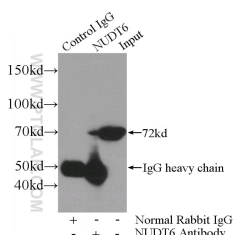
Immunohistochemical of paraffin-embedded human gliomas using 11181-1-AP (NUDT6 antibody) at dilution of 1:50 (under 10x lens)



Jurkat cells were subjected to SDS PAGE followed by western blot with 11181-1-AP (NUDT6 antibody) at dilution of 1:500



Immunofluorescent analysis of ( 10% Formaldehyde ) fixed HepG2 cells using 11181-1-AP ( NUDT6 Antibody) at dilution of 1:50 and Alexa Fluor 488-conjugated AffiniPure Goat Anti-Rabbit IgG(H+L)



IP Result of anti-NUDT6

### Background

NUDT6, also named as FGF2AS and GFG, belongs to the Nudix hydrolase family. It may contribute to the regulation of cell proliferation. NUDT6 maybe a candidate gene for fat deposition. The 72 kDa is a homodimer form of NUDT6.

### Applications

Tested applications:	ELISA, WB, IHC, IP, IF
Cited applications:	IHC, WB
Species specificity:	Human, Mouse, Rat; other species not tested.
Cited species:	Human, rat
Calculated NUDT6 MW:	36 kDa
Observed NUDT6 MW:	72 kDa
Positive WB detected in	Jurkat cells, HepG2 cells, human heart tissue, rat heart tissue, rat liver tissue
Positive IP detected in	HepG2 cells
Positive IHC detected in	Human gliomas tissue
Positive IF detected in	HepG2 cells
Recommended dilution:	WB: 1:200-1:2000 IP: 1:200-1:2000 IHC: 1:20-1:200 IF: 1:50-1:500

Application key: WB = Western blotting, IHC = Immunohistochemistry, IF = Immunofluorescence, IP = Immunoprecipitation

### Immunogen information

Immunogen:	Ag1638
GenBank accession number:	BC009842
Gene ID (NCBI):	11162
Full name:	Nudix (nucleoside diphosphate linked moiety X)-type motif 6

### Product information

Purification method:	Antigen affinity purification
Storage:	PBS with 0.1% sodium azide and 50% glycerol pH 7.3. Store at -20°C.

**(IP:11181-1-AP, 4ug;  
Detection:11181-1-AP 1:500)  
with HepG2 cells lysate  
4000ug.**