

ATP11B Polyclonal Antibody

Catalog number: 13672-1-AP

Size: 20 µg/150 µl

Source: Rabbit

Isotype: IgG

Synonyms:

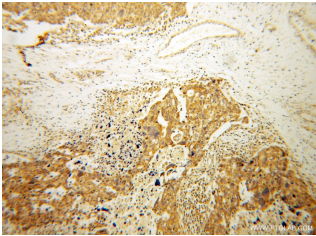
ATP11B; ATP11B, ATPase class

VI type 11B, ATPase IR, ATPase,

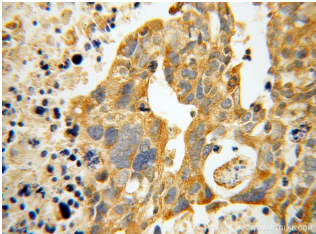
class VI, type 11B, ATP1F, ATP1R,

DKFZp434J238,

DKFZp434N1615, KIAA0956



Immunohistochemical of paraffin-embedded human ovary tumor using 13672-1-AP(ATP11B antibody) at dilution of 1:100 (under 10x lens)



Immunohistochemical of paraffin-embedded human ovary tumor using 13672-1-AP(ATP11B antibody) at dilution of 1:100 (under 40x lens)

Applications

Tested applications:	ELISA, IHC
Species specificity:	Human, Mouse, Rat; other species not tested.
Calculated ATP11B MW:	104aa, 12kd
Observed ATP11B MW:	12kd
Positive IHC detected in:	Human ovary tumor tissue
Recommended dilution:	IHC: 1:20-1:200

Application key: WB = Western blotting, IHC = Immunohistochemistry, IF = Immunofluorescence, IP = Immunoprecipitation

Immunogen information

Immunogen:	Ag4654
GenBank accession number:	BC033880
Gene ID (NCBI):	23200
Full name:	ATPase, class VI, type 11B

Product information

Purification method:	Antigen affinity purification
Storage:	PBS with 0.02% sodium azide and 50% glycerol pH 7.3. Store at -20°C.