

SFTPA1 / Surfactant Protein A Polyclonal Antibody

Catalog number: 11850-1-AP

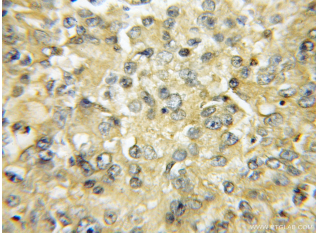
Size: 80 µg/150 µl

Source: Rabbit

Isotype: IgG

Synonyms:

SFTPA1; Alveolar proteinosis protein, COLEC4, Collectin 4, FLJ51913, PSAP, PSP A, PSPA, SFTP1, SFTPA, SFTPA1, SFTPA1B, SP A, SP A1, Surfactant Protein A, surfactant protein A1



Immunohistochemical of paraffin-embedded human lung cancer using 11850-1-AP(SFTPA1 antibody) at dilution of 1:50 (under 10x lens)

Applications

Tested applications:	ELISA, IHC
Species specificity:	Human; other species not tested.
Calculated SFTPA1 / Surfactant Protein A MW:	248aa,26kd
Observed SFTPA1 / Surfactant Protein A MW:	
Positive IHC detected in	Human lung cancer tissue, human brain tissue, human heart tissue, human kidney tissue, human lung tissue, human ovary tissue, human placenta tissue, human skin tissue, human spleen tissue
Recommended dilution:	IHC: 1:20-1:200

Application key: WB = Western blotting, IHC = Immunohistochemistry, IF = Immunofluorescence, IP = Immunoprecipitation

Immunogen information

Immunogen:	Ag2417
GenBank accession number:	BC026229
Gene ID (NCBI):	653509
Full name:	Surfactant protein A1

Product information

Purification method:	Antigen affinity purification
Storage:	PBS with 0.1% sodium azide and 50% glycerol pH 7.3. Store at -20°C.