

ECHS1 Polyclonal Antibody

Catalog number: 11305-1-AP

Size: 20 µg/150 µl

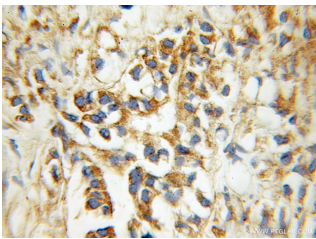
Source: Rabbit

Isotype: IgG

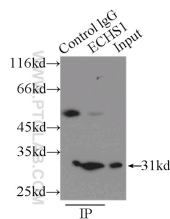
Synonyms:

ECHS1; ECHS1, ECoH-1, Enoyl

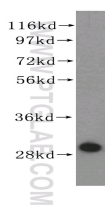
CoA hydratase 1, SCEH



Immunohistochemical of paraffin-embedded human prostate cancer using 11305-1-AP (ECHS1 antibody) at dilution of 1:100 (under 10x lens)



IP Result of anti-ECHS1 (IP:11305-1-AP, 3µg; Detection:11305-1-AP 1:500) with PC-3 cells lysate 3000ug.



human liver tissue were subjected to SDS PAGE followed by western blot with 11305-1-AP (ECHS1 antibody) at dilution of 1:1200

Background

Enoyl-coenzyme A hydratase (ECHS1) is a mitochondrial protein which catalyzes the hydration of 2-trans-enoyl-coenzyme A intermediates to L-3-hydroxyacyl-coenzyme A, playing key role in metabolism of fatty acids in mitochondria. ECHS1 is highly expressed in muscle, liver and fibroblasts. Altered expression of ECHS1 has been considered as a characteristic feature of mitochondria dysfunction. (23275097, 23235493)

Applications

Tested applications:	ELISA, WB, IHC, IP
Cited applications:	IF, WB
Species specificity:	Human, Mouse, Rat; other species not tested.
Cited species:	Human, mouse, rat
Calculated ECHS1 MW:	31 kDa
Observed ECHS1 MW:	31 kDa
Positive WB detected in	Human liver tissue, HeLa cells, HepG2 cells, HT-1080 cells, L02 cells, mouse liver tissue, PC-3 cells, rat heart tissue
Positive IP detected in	PC-3 cells
Positive IHC detected in	Human prostate cancer tissue, human liver tissue
Recommended dilution:	WB: 1:500-1:5000 IP: 1:200-1:2000 IHC: 1:20-1:200

Application key: WB = Western blotting, IHC = Immunohistochemistry, IF = Immunofluorescence, IP = Immunoprecipitation

Immunogen information

Immunogen:	Ag1842
GenBank accession number:	BC008906
Gene ID (NCBI):	1892
Full name:	Enoyl Coenzyme A hydratase, short chain, 1, mitochondrial

Product information

Purification method:	Antigen affinity purification
Storage:	PBS with 0.1% sodium azide and 50% glycerol pH 7.3. Store at -20°C.