

## TPD52L2 Polyclonal Antibody

Catalog number: 11795-1-AP

Size: 67 µg/150 µl

Source: Rabbit

Isotype: IgG

Synonyms:

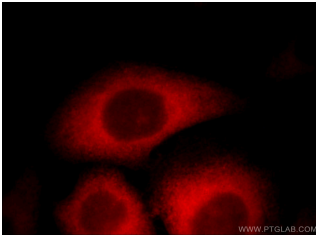
TPD52L2; D54,

DKFZp686A1765, hD54,

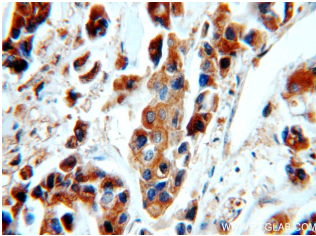
TPD52L2, TPD54, tumor

protein D52 like 2, Tumor

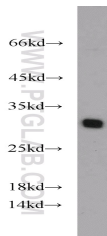
protein D54



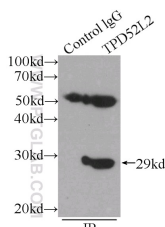
Immunofluorescent analysis of HepG2 cells, using TPD52L2 antibody 11795-1-AP at 1:25 dilution and Rhodamine-labeled goat anti-rabbit IgG (red).



Immunohistochemical of paraffin-embedded human breast cancer using 11795-1-AP (TPD52L2 antibody) at dilution of 1:50 (under 40x lens)



HEK-293 cells were subjected to SDS PAGE followed by western blot with 11795-1-AP (TPD52L2 antibody) at dilution of 1:800



### Background

Tumor protein D52-like proteins (TPD52) are small coiled-coil motif bearing proteins that were first identified in breast carcinoma. Three human TPD52 members had been identified, named hD52 (TPD52), hD53 (TPD52L1), and hD54 (TPD52L2). The most important characteristic of the protein family is a highly conserved coiled-coil motif that is required for homo- and heteromeric interaction with other TPD52-like proteins. TPD52 and related proteins have been implicated in cell proliferation, apoptosis, and vesicle trafficking. TPD52L2 has five isoforms produced by alternative splicing, and its multiple sites have been identified to be phosphorylated. Interaction of TPD52L2 with MAL2, a novel member of the MAL proteolipid family, may be required for the role of TPD52L2 in vesicle transport.

### Applications

Tested applications:	ELISA, WB, IHC, IF, IP
Species specificity:	Human, Mouse, Rat; other species not tested.
Calculated TPD52L2 MW:	206aa, 22 kDa
Observed TPD52L2 MW:	25-30kd
Positive WB detected in	HEK-293 cells, HeLa cells, human brain tissue, human kidney tissue, Jurkat cells, K-562 cells, MCF7 cells, mouse brain tissue, rat brain tissue
Positive IP detected in	HEK-293 cells
Positive IHC detected in	Human breast cancer tissue, human testis tissue
Positive IF detected in	HepG2 cells
Recommended dilution:	WB: 1:200-1:2000 IP: 1:200-1:2000 IHC: 1:20-1:200 IF: 1:10-1:100

Application key: WB = Western blotting, IHC = Immunohistochemistry, IF = Immunofluorescence, IP = Immunoprecipitation

### Immunogen information

Immunogen:	Ag2364
GenBank accession number:	BC006804
Gene ID (NCBI):	7165
Full name:	Tumor protein D52-like 2

### Product information

Purification method:	Antigen affinity purification
Storage:	PBS with 0.1% sodium azide and 50% glycerol pH 7.3. Store at -20°C.

**IP Result of anti-TPD52L2  
(IP:11795-1-AP, 3ug;  
Detection:11795-1-AP 1:800)  
with HEK-293 cells lysate  
2400ug.**