

ZEB1

Polyclonal ANTIBODY

Catalog Number: 21544-1-AP

Featured Product

9 Publications

Basic Information

Catalog Number:
21544-1-AP

Size:
41 µg/150 µl

Source:
Rabbit

Isotype:
IgG

Purification Method:
Antigen affinity purification

Immunogen Catalog Number:
AG16204

GenBank Accession Number:
BC112392

GeneID (NCBI):
6935

Full Name:
zinc finger E-box binding homeobox 1

Calculated MW:
1125aa, 124 kDa

Observed MW:
190-210 kDa

Recommended Dilutions:

WB 1:500-1:5000

IP 1:200-1:2000

IHC 1:50-1:500

Applications

Tested Applications:
ELISA, WB, IP, IHC

Cited Applications:
IHC, WB

Species Specificity:
Human, Mouse, Rat

Cited Species:
human, mouse, rat

Positive Controls:

WB : MCF7 cells; HeLa cells, PC-3 cells

IP : MCF-7 cells;

IHC : human breast cancer tissue; human lung cancer tissue

Background Information

ZEB1 (zinc-finger-enhancer binding protein 1), which is a member of the Zincfinger-Homeobox (ZFH)-family of repressors, acts as a transcriptional repressor that inhibits interleukin-2 (IL-2) gene expression. Depending on the quantity of cDNA and on the cell type, ZEB1 can enhance or repress the promoter activity of the ATP1A1 gene. Represses E-cadherin promoter and induces an epithelial-mesenchymal transition (EMT) by recruiting SMARCA4/BRG1. Represses BCL6 transcription in the presence of the corepressor CTBP1. Positively regulates neuronal differentiation. The calculated molecular weight of ZEB1 is 124 kDa, but the post phosphorylation of protein is about 190-210 kDa. This is a rabbit polyclonal antibody raised against part of the full length of ZEB1 of human.

Notable Publications

Author	Pubmed ID	Journal	Application
Hongtao Duan	27916370	J Surg Res	WB
Xiao-Bin Cui	27188458	J Transl Med	WB
Yuan-Hu Yao	27266881	Chin J Cancer	WB

Storage

Storage:

Store at -20°C. Stable for one year after shipment.

Storage Buffer:

PBS with 0.02% sodium azide and 50% glycerol pH 7.3.

Aliquoting is unnecessary for -20°C storage

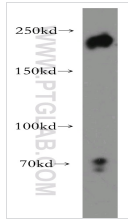
For technical support and original validation data for this product please contact:

T: 1 (888) 4PTGLAB (1-888-478-4522) (toll free in USA), or 1(312) 455-8498 (outside USA)

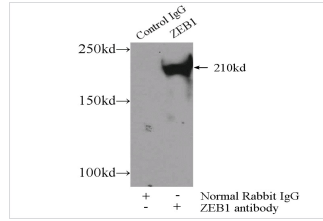
E: proteintech@ptglab.com
W: ptglab.com

This product is exclusively available under Proteintech Group brand and is not available to purchase from any other manufacturer.

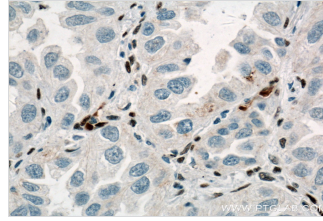
Selected Validation Data



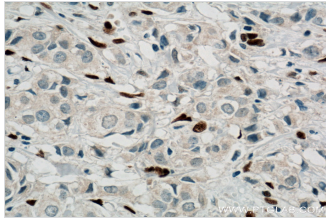
MCF7 cells were subjected to SDS PAGE followed by western blot with 21544-1-AP(ZEB1 antibody) at dilution of 1:500



IP Result of anti-ZEB1 (IP:21544-1-AP 4ug; Detection:21544-1-AP 1:500) with MCF-7 cells lysate 4000ug.



Immunohistochemistry of paraffin-embedded human lung cancer tissue slide using 21544-1-AP(ZEB1 Antibody) at dilution of 1:500 (under 40x lens), heat mediated antigen retrieved with Tris-EDTA buffer(pH9).



Immunohistochemistry of paraffin-embedded human breast cancer tissue slide using 21544-1-AP(ZEB1 Antibody) at dilution of 1:500 (under 40x lens), heat mediated antigen retrieved with Tris-EDTA buffer(pH9).