

## Complement factor B Polyclonal Antibody

Catalog number: 10170-1-AP

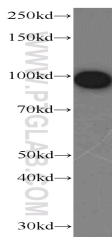
Size: 21 µg/150 µl

Source: Rabbit

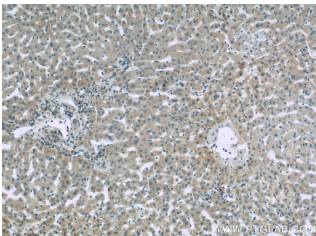
Isotype: IgG

Synonyms:

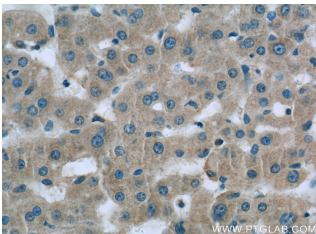
CFB; BF, BFD, C3/C5 convertase, CFAB, CFB, Complement factor B, FB, FBI12, GBG, Glycine rich beta glycoprotein, H2 Bf, PBF2, Properdin factor B



human serum tissue were subjected to SDS PAGE followed by western blot with 10170-1-AP(CFB antibody) at dilution of 1:800



Immunohistochemistry of paraffin-embedded human liver tissue slide using 10170-1-AP( CFB Antibody) at dilution of 1:50 (under 10x lens)



Immunohistochemistry of paraffin-embedded human liver tissue slide using 10170-1-AP( CFB Antibody) at dilution of 1:50 (under 40x lens)

### Background

Complement factor B (CFB) is a component of the alternative pathway of complement activation. Complement factor B is cleaved into Ba and Bb by factor D in the presence of C3b. The active subunit Bb is a serine protease which associates with C3b to form the alternative pathway C3 convertase. Bb is involved in the proliferation of preactivated B lymphocytes, while Ba inhibits their proliferation.

### Applications

Tested applications:	ELISA, WB, IHC
Species specificity:	Human; other species not tested.
Calculated Complement factor B MW:	86 kDa
Observed Complement factor B MW:	93-100 kDa, 60-69 kDa
Positive WB detected in	Human serum tissue, human blood tissue
Positive IHC detected in	Human liver tissue
Recommended dilution:	WB: 1:200-1:2000 IHC: 1:20-1:200

Application key: WB = Western blotting, IHC = Immunohistochemistry, IF = Immunofluorescence, IP = Immunoprecipitation

### Immunogen information

Immunogen:	Ag0226
GenBank accession number:	BC007990
Gene ID (NCBI):	629
Full name:	Complement factor B

### Product information

Purification method:	Antigen affinity purification
Storage:	PBS with 0.1% sodium azide and 50% glycerol pH 7.3. Store at -20°C.