

## EIF6 Polyclonal Antibody

Catalog number: 10291-1-AP

Size: 35 µg/150 µl

Source: Rabbit

Isotype: IgG

Synonyms:

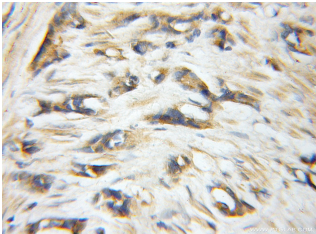
EIF6; 2, b, b(2)gcn, B(2)GCN

homolog, CAB, eIF 6, EIF3A,

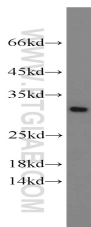
EIF6, gcn, integrin beta 4

binding protein, ITGB4BP,

p27(BBP), p27BBP



Immunohistochemical of paraffin-embedded human prostate cancer using 10291-1-AP (EIF6 antibody) at dilution of 1:50 (under 10x lens)



COLO 320 cells were subjected to SDS PAGE followed by western blot with 10291-1-AP (EIF6 antibody) at dilution of 1:1000

### Background

P27(BBP/eIF6) is an evolutionarily conserved protein that was originally identified as p27(BBP). It functions as an interactor of the cytoplasmic domain of integrin 4 and as the putative translation initiation factor eIF6. p27BBP is found in two pools: one nuclear pool enriched in the perinucleolar region, and one cytoplasmic pool. p27BBP binds to the fibronectin type III domains of integrin 4 subunit (ITGB4), an important functional component of hemidesmosomes, and help link ITGB4 to the intermediate filament cytoskeleton. In vitro and in vivo studies demonstrated that p27BBP is essential for cell viability and has a primary function in the biogenesis of the 60S ribosomal subunit. p27BBP protein is increased in rapidly cycling cells and decreased in villous cells committed to apoptotic cell death. In dysplastic colorectal adenomas and carcinomas, p27BBP displayed a large increase of its nucleolar component and was associated with the nuclear matrix. In particular, p27BBP increased progressively from adenomas to carcinomas and was related to the tumor stage.

### Applications

Tested applications:	ELISA, WB, IHC
Cited applications:	WB
Species specificity:	Human, Mouse, Rat; other species not tested.
Cited species:	Human
Calculated EIF6 MW:	27 kDa
Observed EIF6 MW:	27-30 kDa
Positive WB detected in	COLO 320 cells, A375 cells, HEK-293 cells, HeLa cells, HepG2 cells, mouse liver tissue
Positive IHC detected in	Human prostate cancer tissue
Recommended dilution:	WB: 1:500-1:5000 IHC: 1:20-1:200

Application key: WB = Western blotting, IHC = Immunohistochemistry, IF = Immunofluorescence, IP = Immunoprecipitation

### Immunogen information

Immunogen:	Ag0324
GenBank accession number:	BC001119
Gene ID (NCBI):	3692
Full name:	Eukaryotic translation initiation factor 6

### Product information

Purification method:	Antigen affinity purification
Storage:	PBS with 0.1% sodium azide and 50% glycerol pH 7.3. Store at -20°C.