

THOP1 Polyclonal Antibody

Catalog number: 11738-1-AP

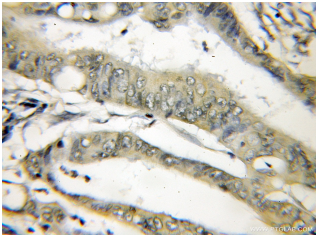
Size: 20 µg/150 µl

Source: Rabbit

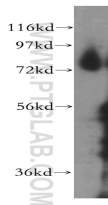
Isotype: IgG

Synonyms:

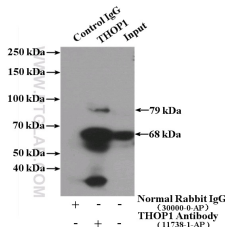
THOP1; Endopeptidase 24.15,
EP24.15, MEPD_HUMAN,
MP78, Thimet oligopeptidase,
thimet oligopeptidase 1,
THOP1, TOP



Immunohistochemical of paraffin-embedded human colon cancer using 11738-1-AP (THOP1 antibody) at dilution of 1:50 (under 10x lens)



human placenta tissue were subjected to SDS PAGE followed by western blot with 11738-1-AP (THOP1 antibody) at dilution of 1:500



IP Result of anti-THOP1 (IP:11738-1-AP, 4µg; Detection:11738-1-AP 1:500) with human placenta tissue lysate 1520µg.

Applications

Tested applications:	ELISA, WB, IHC, IP
Species specificity:	Human, Mouse, Rat; other species not tested.
Calculated THOP1 MW:	689aa, 79 kDa
Observed THOP1 MW:	79 kDa
Positive WB detected in	Human placenta tissue
Positive IP detected in	Human placenta tissue
Positive IHC detected in	Human colon cancer tissue
Recommended dilution:	WB: 1:500-1:5000
	IP: 1:200-1:2000
	IHC: 1:20-1:200

Application key: WB = Western blotting, IHC = Immunohistochemistry, IF = Immunofluorescence, IP = Immunoprecipitation

Immunogen information

Immunogen:	Ag2268
GenBank accession number:	BC000135
Gene ID (NCBI):	7064
Full name:	Thimet oligopeptidase 1

Product information

Purification method:	Antigen affinity purification
Storage:	PBS with 0.1% sodium azide and 50% glycerol pH 7.3. Store at -20°C.