

CD24 Polyclonal Antibody

Catalog number: 10600-1-AP

Size: 25 µg/150 µl

Source: Rabbit

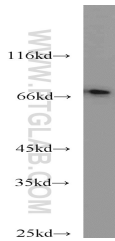
Isotype: IgG

Synonyms:

CD24; CD24, CD24 molecule,

CD24A, FLJ22950, FLJ43543,

Signal transducer CD24



mouse brain tissue were subjected to SDS PAGE followed by western blot with 10600-1-AP (CD24 antibody) at dilution of 1:1000

Background

CD24 (known as heat stable antigen) is a small highly glycosylated GPI-linked sialoprotein. It is normally expressed at the surface of most B lymphocytes and differentiating neuroblasts, and it is also up-regulated in a wide variety of cancers. Studies have shown that CD24 functions in the regulation of B-cell apoptosis, leukocyte signal transduction, and leukocyte adhesion. Since it is highly glycosylated, the apparent molecular weight of CD24 could be variable, ranging from 30 kDa to 70 kDa. (Ref: Akihiko Sano, MD., 2009)

Applications

Tested applications:	ELISA, WB
Species specificity:	Human, Mouse, Rat; other species not tested.
Calculated CD24 MW:	8 kDa
Observed CD24 MW:	30-70 kDa
Positive WB detected in	Mouse brain tissue, HeLa cells, rat spleen tissue
Recommended dilution:	WB: 1:200-1:2000

Application key: WB = Western blotting, IHC = Immunohistochemistry, IF = Immunofluorescence, IP = Immunoprecipitation

Immunogen information

Immunogen:	Ag0654
GenBank accession number:	BC007674
Gene ID (NCBI):	100133941
Full name:	CD24 molecule

Product information

Purification method:	Antigen affinity purification
Storage:	PBS with 0.02% sodium azide and 50% glycerol pH 7.3. Store at -20°C.