

RASSF6 Polyclonal Antibody

Catalog number: 11921-1-AP

Size: 80 µg/150 µl

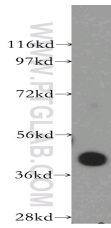
Source: Rabbit

Isotype: IgG

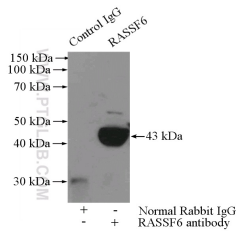
Synonyms:

RASSF6; DKFZp686K23225,

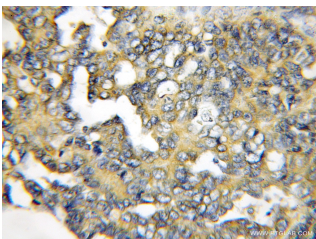
RASSF6



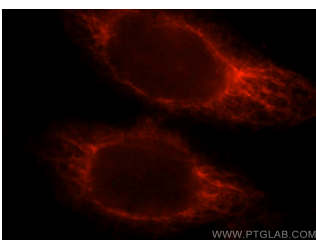
U-937 cells were subjected to SDS PAGE followed by western blot with 11921-1-AP(RASSF6 antibody) at dilution of 1:500



IP Result of anti-RASSF6 (IP:11921-1-AP, 4µg; Detection:11921-1-AP 1:500) with HepG2 cells lysate 2400µg.



Immunohistochemical of paraffin-embedded human ovary tumor using 11921-1-AP(RASSF6 antibody) at dilution of 1:100 (under 10x lens)



Immunofluorescent analysis of HeLa cells, using RASSF6 antibody 11921-1-AP at 1:25 dilution and Rhodamine-

Applications

Tested applications:	ELISA, WB, IHC, IF, IP
Cited applications:	IHC, WB
Species specificity:	Human, Mouse, Rat; other species not tested.
Cited species:	Human
Calculated RASSF6 MW:	369aa, 43 kDa
Observed RASSF6 MW:	43 kDa
Positive WB detected in	U-937 cells, COLO 320 cells, HeLa cells, HepG2 cells, PC-3 cells
Positive IP detected in	HepG2 cells
Positive IHC detected in	Human ovary tumor tissue, human prostate cancer tissue
Positive IF detected in	HeLa cells
Recommended dilution:	WB: 1:1000-1:10000 IP: 1:200-1:2000 IHC: 1:20-1:200 IF: 1:10-1:100

Application key: WB = Western blotting, IHC = Immunohistochemistry, IF = Immunofluorescence, IP = Immunoprecipitation

Immunogen information

Immunogen:	Ag2565
GenBank accession number:	BC058835
Gene ID (NCBI):	166824
Full name:	Ras association (RalGDS/AF-6) domain family member 6

Product information

Purification method:	Antigen affinity purification
Storage:	PBS with 0.1% sodium azide and 50% glycerol pH 7.3. Store at -20°C.

**labeled goat anti-rabbit IgG
(red).**