

MAGEH1 Polyclonal Antibody

Catalog number: 12424-1-AP

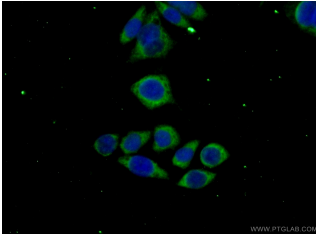
Size: 47 µg/150 µl

Source: Rabbit

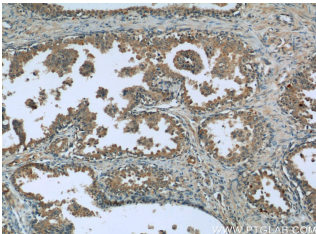
Isotype: IgG

Synonyms:

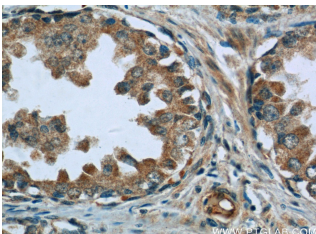
MAGEH1; Apoptosis related protein 1, APR 1, APR1, MAGE H1 antigen, MAGEH, MAGEH1, melanoma antigen family H, 1, Melanoma associated antigen H1, Restin



Immunofluorescent analysis of (-20 Ethanol) fixed PC-3 cells using 12424-1-AP (MAGEH1 Antibody) at dilution of 1:50 and Alexa Fluor 488-conjugated AffiniPure Goat Anti-Rabbit IgG(H+L)



Immunohistochemistry of paraffin-embedded human prostate cancer tissue slide using 12424-1-AP (MAGEH1 Antibody) at dilution of 1:50 (under 10x lens)



Immunohistochemistry of paraffin-embedded human prostate cancer tissue slide using 12424-1-AP (MAGEH1 Antibody) at dilution of 1:50 (under 40x lens)

Applications

Tested applications:	ELISA, WB, IHC, IF
Species specificity:	Human, Mouse, Rat; other species not tested.
Calculated MAGEH1 MW:	219aa, 24 kDa
Observed MAGEH1 MW:	28 kDa
Positive WB detected in	Y79 cells, mouse brain tissue, PC-3 cells
Positive IHC detected in	Human prostate cancer tissue
Positive IF detected in	PC-3 cells
Recommended dilution:	WB: 1:200-1:2000
	IHC: 1:20-1:200
	IF: 1:50-1:500

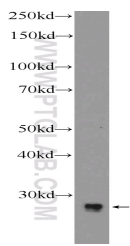
Application key: WB = Western blotting, IHC = Immunohistochemistry, IF = Immunofluorescence, IP = Immunoprecipitation

Immunogen information

Immunogen:	Ag3090
GenBank accession number:	BC011954
Gene ID (NCBI):	28986
Full name:	Melanoma antigen family H, 1

Product information

Purification method:	Antigen affinity purification
Storage:	PBS with 0.1% sodium azide and 50% glycerol pH 7.3. Store at -20°C.



Y79 cells were subjected to SDS PAGE followed by western blot with 12424-1-AP(MAGEH1 Antibody) at dilution of 1:600