

## ISCA2 Polyclonal Antibody

Catalog number: 13200-1-AP

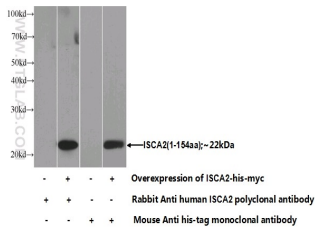
Size: 36 µg/150 µl

Source: Rabbit

Isotype: IgG

Synonyms:

ISCA2; c14\_5557, HBLD1, ISA2,  
ISCA2



Transfected HEK-293 cells were subjected to SDS PAGE followed by western blot with 13200-1-AP( ISCA2 Antibody) at dilution of 1:1000

### Applications

Tested applications:	ELISA, WB
Species specificity:	Human; other species not tested.
Calculated ISCA2 MW:	154aa,16 kDa
Observed ISCA2 MW:	
Positive WB detected in	Transfected HEK-293 cells
Recommended dilution:	WB: 1:500-1:5000

Application key: WB = Western blotting, IHC = Immunohistochemistry, IF = Immunofluorescence, IP = Immunoprecipitation

### Immunogen information

Immunogen:	Ag3941
GenBank accession number:	BC032893
Gene ID (NCBI):	122961
Full name:	Iron-sulfur cluster assembly 2 homolog ( <i>S. cerevisiae</i> )

### Product information

Purification method:	Antigen affinity purification
Storage:	PBS with 0.1% sodium azide and 50% glycerol pH 7.3. Store at -20°C.