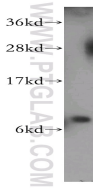
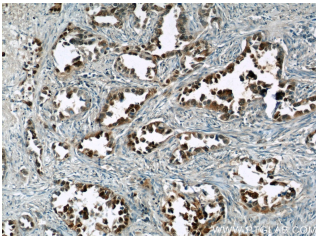


S100P Polyclonal Antibody

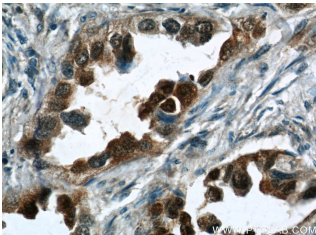
Catalog number: 11803-1-AP
Size: 87 µg/150 µl
Source: Rabbit
Isotype: IgG
Synonyms:
S100P; MIG9, Protein S100 E,
Protein S100 P, S100 calcium
binding protein P, S100E, S100P



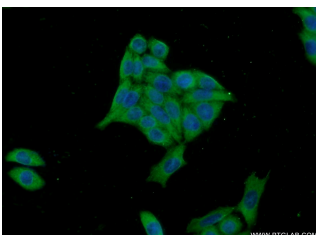
HeLa cells were subjected to SDS PAGE followed by western blot with 11803-1-AP (S100P antibody) at dilution of 1:1000



Immunohistochemical of paraffin-embedded human lung cancer using 11803-1-AP (S100P antibody) at dilution of 1:50 (under 10x lens)



Immunohistochemical of paraffin-embedded human lung cancer using 11803-1-AP (S100P antibody) at dilution of 1:50 (under 40x lens)



Immunofluorescent analysis of HeLa cells using 11803-1-

Background

S100P protein is a relatively small (95 amino acid) isoform of the S100 protein family that was first isolated from human placenta. Overexpression of S100P has been detected in several cancers such as breast, colon, prostate, pancreatic and lung carcinomas, and the protein has been functionally implicated in carcinogenic processes. S100P protein is widely expressed in both normal and neoplastic tissues. It clearly shows ectopic expression in some cancers. Based on the high expression in certain tumors, S100P could represent a potential target for novel diagnostic and therapeutic applications.

Applications

| | |
|---------------------------|---|
| Tested applications: | ELISA, IHC, WB, FC, IF |
| Cited applications: | IHC |
| Species specificity: | Human; other species not tested. |
| Cited species: | Human |
| Calculated S100P MW: | 95aa, 11 kDa |
| Observed S100P MW: | 9 kDa |
| Positive WB detected in: | HeLa cells |
| Positive IHC detected in: | Human lung cancer tissue, human breast cancer tissue, human lung tissue |
| Positive IF detected in: | HeLa cells, HepG2 cells |
| Positive FC detected in: | HepG2 cells |
| Recommended dilution: | WB: 1:500-1:5000 IHC: 1:20-1:200 IF: 1:20-1:200 FC: N/A |

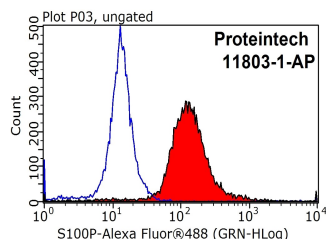
Application key: WB = Western blotting, IHC = Immunohistochemistry, IF = Immunofluorescence, IP = Immunoprecipitation

Immunogen information

| | |
|---------------------------|--------------------------------|
| Immunogen: | Ag2379 |
| GenBank accession number: | BC006819 |
| Gene ID (NCBI): | 6286 |
| Full name: | S100 calcium binding protein P |

Product information

| | |
|----------------------|---|
| Purification method: | Antigen affinity purification |
| Storage: | PBS with 0.1% sodium azide and 50% glycerol pH 7.3. Store at -20°C. |



1X10⁶ HepG2 cells were stained with 0.2µg S100P

**AP(S100P Antibody) at
dilution of 1:50 and Alexa
Fluor 488-conjugated
AffiniPure Goat Anti-Rabbit
IgG(H+L)**

**antibody (11803-1-AP, red)
and control antibody (blue).
Fixed with 90% MeOH
blocked with 3% BSA (30
min). Alexa Fluor 488-
conjugated AffiniPure Goat
Anti-Rabbit IgG(H+L) with
dilution 1:1000.**