

## GOPC Polyclonal Antibody

Catalog number: 12163-1-AP

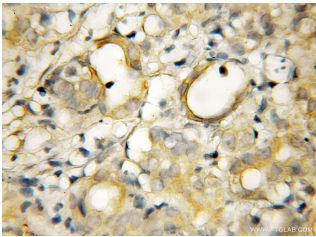
Size: 20 µg/150 µl

Source: Rabbit

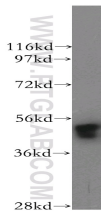
Isotype: IgG

Synonyms:

GOPC; GOPC, GOPC1, CAL,  
dJ94G16.2, FIG



Immunohistochemical of paraffin-embedded human pancreas cancer using 12163-1-AP(GOPC antibody) at dilution of 1:50 (under 10x lens)



K-562 cells were subjected to SDS PAGE followed by western blot with 12163-1-AP(GOPC antibody) at dilution of 1:800

### Applications

<b>Tested applications:</b>	ELISA, WB, IHC
<b>Species specificity:</b>	Human, mouse, rat; other species not tested.
<b>Calculated GOPC MW:</b>	454aa,50 kDa
<b>Observed GOPC MW:</b>	50kd
<b>Positive WB detected in</b>	K-562 cells, human colon tissue, human kidney tissue, human lung tissue
<b>Positive IHC detected in</b>	Human pancreas cancer
<b>Recommended dilution:</b>	WB: 1:500-1:5000 IHC: 1:20-1:200

Application key: WB = Western blotting, IHC = Immunohistochemistry, IF = Immunofluorescence, IP = Immunoprecipitation

### Immunogen information

<b>Immunogen:</b>	Ag2804
<b>GenBank accession number:</b>	BC009553
<b>Gene ID (NCBI):</b>	57120
<b>Full name:</b>	Golgi associated PDZ and coiled-coil motif containing

### Product information

<b>Purification method:</b>	Antigen affinity purification
<b>Storage:</b>	PBS with 0.1% sodium azide and 50% glycerol pH 7.3. Store at -20°C.