

CHCHD1 Polyclonal Antibody

Catalog number: 11728-1-AP

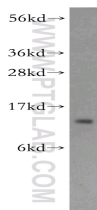
Size: 65 µg/150 µl

Source: Rabbit

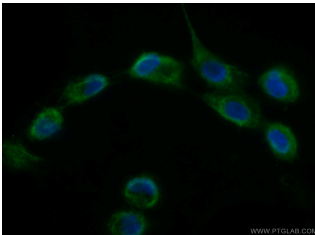
Isotype: IgG

Synonyms:

CHCHD1; C10orf34, C2360,
CHCHD1, FLJ25854, Nuclear
protein C2360



A431 cells were subjected to SDS PAGE followed by western blot with 11728-1-AP(CHCHD1 antibody) at dilution of 1:300



Immunofluorescent analysis of (10% Formaldehyde) fixed A431 cells using 11728-1-AP(CHCHD1 Antibody) at dilution of 1:50 and Alexa Fluor 488-conjugated AffiniPure Goat Anti-Rabbit IgG(H+L)

Applications

Tested applications:	ELISA, WB, IF
Species specificity:	Human,Mouse,Rat; other species not tested.
Calculated CHCHD1 MW:	13 kDa
Observed CHCHD1 MW:	13 kDa
Positive WB detected in	A431 cells
Positive IF detected in	A431 cells
Recommended dilution:	WB: 1:200-1:2000 IF: 1:50-1:500

Application key: WB = Western blotting, IHC = Immunohistochemistry, IF = Immunofluorescence, IP = Immunoprecipitation

Immunogen information

Immunogen:	Ag2325
GenBank accession number:	BC020852
Gene ID (NCBI):	118487
Full name:	Coiled-coil-helix-coiled-coil-helix domain containing 1

Product information

Purification method:	Antigen affinity purification
Storage:	PBS with 0.1% sodium azide and 50% glycerol pH 7.3. Store at -20°C.