

STIM1 Polyclonal Antibody

Catalog number: 11565-1-AP

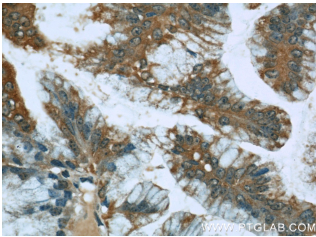
Size: 63 µg/150 µl

Source: Rabbit

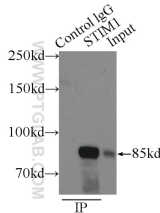
Isotype: IgG

Synonyms:

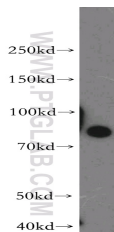
STIM1; D11S4896E, GOK,
STIM1, stromal interaction
molecule 1



Immunohistochemical of paraffin-embedded human ovary tumor using 11565-1-AP (STIM1 antibody) at dilution of 1:50 (under 40x lens)



IP Result of anti-STIM1 (IP:11565-1-AP, 3µg; Detection:11565-1-AP 1:1000) with Raji cells lysate 3800µg.



Jurkat cells were subjected to SDS PAGE followed by western blot with 11565-1-AP (STIM1 antibody) at dilution of 1:300

Background

STIM1, also named as GOK, is an ER Ca²⁺ sensor. Upon Ca²⁺ store depletion, STIM1 clusters at ER-plasma membrane junctions where it interacts with and gates Ca²⁺-permeable Orai1 ion channels. STIM1 is implicated in tumor growth suppression and stromal-haematopoietic cell interactions. Defects in STIM1 gene can cause immune dysfunction with impaired T-cell activation. STIM1 can inhibit L-type voltage-gated Ca(2+) channels in neurons. Temperature is an important regulator of STIM1 function. The MW of STIM1 is about 80-90 kDa which may be due to the phosphorylation or glycosylation forms. Catalog#11565-1-AP is rabbit polyclonal antibody raised against the N-terminal of human STIM1.

Applications

| | |
|--------------------------|--|
| Tested applications: | ELISA, WB, IP, IHC, IF, FC |
| Cited applications: | IF, IHC, IP, WB |
| Species specificity: | Human, Mouse; other species not tested. |
| Cited species: | Human, mouse, rat |
| Calculated STIM1 MW: | 685aa, 77 kDa |
| Observed STIM1 MW: | 80-90 kDa |
| Positive WB detected in | Jurkat cells, BxPC-3 cells, HT-1080 cells, mouse liver tissue, NIH/3T3 cells, Raji cells |
| Positive IP detected in | Raji cells |
| Positive IHC detected in | Human ovary tumor tissue, human lung cancer tissue |
| Positive IF detected in | HepG2 cells |
| Positive FC detected in | HepG2 cells |
| Recommended dilution: | WB: 1:200-1:2000 IP: 1:500-1:5000 IHC: 1:20-1:200 IF: 1:10-1:100 FC: N/A |

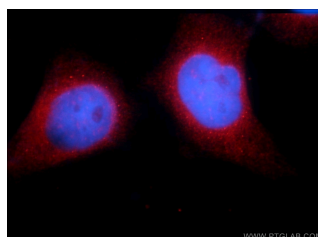
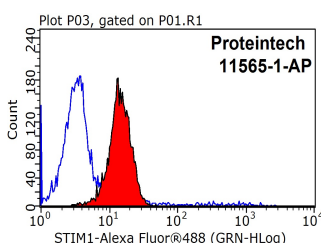
Application key: WB = Western blotting, IHC = Immunohistochemistry, IF = Immunofluorescence, IP = Immunoprecipitation

Immunogen information

| | |
|---------------------------|--------------------------------|
| Immunogen: | Ag2140 |
| GenBank accession number: | BC021300 |
| Gene ID (NCBI): | 6786 |
| Full name: | Stromal interaction molecule 1 |

Product information

| | |
|----------------------|---|
| Purification method: | Antigen affinity purification |
| Storage: | PBS with 0.1% sodium azide and 50% glycerol pH 7.3. Store at -20°C. |



1X10⁶ HepG2 cells were stained with .2ug STIM1 antibody (11565-1-AP, red) and control antibody (blue). Fixed with 90% MeOH blocked with 3% BSA (30 min). Alexa Fluor 488-conjugated AffiniPure Goat Anti-Rabbit IgG(H+L) with dilution 1:1000.

Immunofluorescent analysis of HepG2 cells using 11565-1-AP (STIM1 Antibody) at dilution of 1:25 and Rhodamine-Goat anti-Rabbit IgG