

PPID Polyclonal Antibody

Catalog number: 12716-1-AP

Size: 23 µg/150 µl

Source: Rabbit

Isotype: IgG

Synonyms:

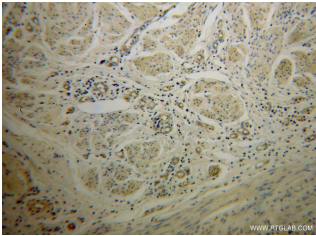
PPID; Cyclophilin 40,

Cyclophilin D, Cyclophilin

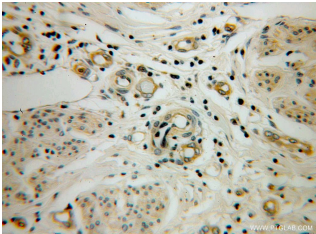
related protein, CYP 40, CYP40,

CYPD, peptidylprolyl isomerase

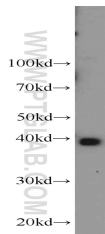
D, PPIase D, PPID, Rotamase D



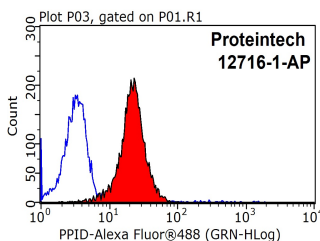
Immunohistochemical of paraffin-embedded human cervical cancer using 12716-1-AP (PPID antibody) at dilution of 1:50 (under 10x lens)



Immunohistochemical of paraffin-embedded human cervical cancer using 12716-1-AP (PPID antibody) at dilution of 1:50 (under 40x lens)



mouse brain tissue were subjected to SDS PAGE followed by western blot with 12716-1-AP (PPID antibody) at dilution of 1:1000



Background

PPID (Peptidyl-prolyl cis-trans isomerase D) is also named as CYP40, CYPD and belongs to the cyclophilin-type PPIase family, which accelerate the folding of proteins. It catalyzes the cis-trans isomerization of proline imidic peptide bonds in oligopeptides. The inactivation of the Ppid gene rescued the disease phenotype of Col6a1 deficiency (PMID:19293339).

Applications

Tested applications:	ELISA, WB, IHC, FC, IP
Species specificity:	Human, Mouse, Rat; other species not tested.
Calculated PPID MW:	370aa, 41 kDa
Observed PPID MW:	38-41 kDa
Positive WB detected in	Mouse brain tissue, A549 cells, human brain tissue, Jurkat cells, MCF7 cells, NIH/3T3 cells, Raji cells, rat brain tissue
Positive IP detected in	Mouse brain tissue
Positive IHC detected in	Human cervical cancer tissue
Positive FC detected in	HeLa cells
Recommended dilution:	WB: 1:500-1:5000 IP: 1:500-1:5000 IHC: 1:20-1:200 FC: N/A

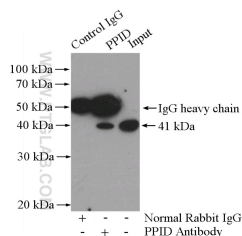
Application key: WB = Western blotting, IHC = Immunohistochemistry, IF = Immunofluorescence, IP = Immunoprecipitation

Immunogen information

Immunogen:	Ag3409
GenBank accession number:	BC030707
Gene ID (NCBI):	5481
Full name:	Peptidylprolyl isomerase D

Product information

Purification method:	Antigen affinity purification
Storage:	PBS with 0.1% sodium azide and 50% glycerol pH 7.3. Store at -20°C.



1X10⁶ HeLa cells were stained with 0.2ug PPID antibody (12716-1-AP, red) and control antibody (blue). Fixed with 90% MeOH blocked with 3% BSA (30 min). Alexa Fluor 488-conjugated AffiniPure Goat Anti-Rabbit IgG(H+L) with dilution 1:1500.

IP Result of anti-PPID (IP:12716-1-AP, 4ug; Detection:12716-1-AP 1:1000) with mouse brain tissue lysate 4000ug.