

LIG4 Polyclonal Antibody

Catalog number: 12695-1-AP

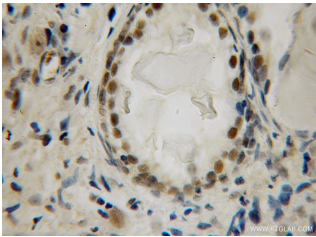
Size: 31 µg/150 µl

Source: Rabbit

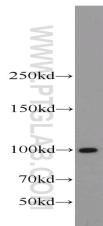
Isotype: IgG

Synonyms:

LIG4; DNA ligase 4, DNA ligase IV, LIG4, ligase IV, DNA, ATP dependent



Immunohistochemical of paraffin-embedded human prostate cancer using 12695-1-AP (LIG4 antibody) at dilution of 1:100 (under 10x lens)



mouse testis tissue were subjected to SDS PAGE followed by western blot with 12695-1-AP (LIG4 antibody) at dilution of 1:600

Background

Two major pathways, homologous recombination (HR) and nonhomologous end joining (NHEJ), counteract one of the most toxic lesions, the DSB. The core protein complex mediating NHEJ in mammals includes DNA ligase IV (Lig4). Lig4 belongs to an ATP-dependent DNA ligase family, and joins single-strand breaks in a double-stranded polydeoxynucleotide in an ATP-dependent reaction. The complex Lig4-XRCC4 is responsible for the NHEJ ligation step, and XRCC4 enhances the joining activity of Lig4.

Read more about this antibody on the blog:

<http://blog.ptglab.com/index.php/proteintechs-anti-neil3-antibody-used-investigate-mechanisms-of-dna-repair/?preview=true>

Applications

Tested applications:	ELISA, WB, IHC
Cited applications:	WB
Species specificity:	Human, Mouse; other species not tested.
Cited species:	Human, mouse
Calculated LIG4 MW:	911aa, 104 kDa
Observed LIG4 MW:	100-104 kDa
Positive WB detected in	Mouse testis tissue, HeLa cells, HepG2 cells, mouse liver tissue, rat testis tissue
Positive IHC detected in	Human prostate cancer tissue, human testis tissue
Recommended dilution:	WB: 1:200-1:2000 IHC: 1:20-1:200

Application key: WB = Western blotting, IHC = Immunohistochemistry, IF = Immunofluorescence, IP = Immunoprecipitation

Immunogen information

Immunogen:	Ag3385
GenBank accession number:	BC037491
Gene ID (NCBI):	3981
Full name:	Ligase IV, DNA, ATP-dependent

Product information

Purification method:	Antigen affinity purification
Storage:	PBS with 0.1% sodium azide and 50% glycerol pH 7.3. Store at -20°C.