

Gamma adaptin Polyclonal Antibody

Catalog number: 13258-1-AP

Size: 27 µg/150 µl

Source: Rabbit

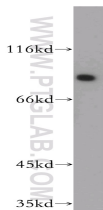
Isotype: IgG

Synonyms:

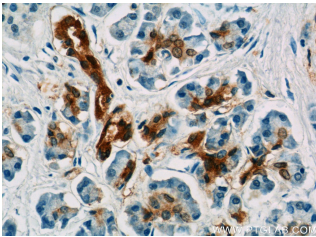
AP1G1; ADTG, AP 1 complex

subunit gamma 1, AP1G1,

CLAPG1, Gamma1 adaptin



HEK-293 cells were subjected to SDS PAGE followed by western blot with 13258-1-AP (AP1G1 antibody) at dilution of 1:400



Immunohistochemistry of paraffin-embedded human pancreas cancer tissue slide using 13258-1-AP (Gamma adaptin Antibody) at dilution of 1:50 (under 40x lens)

Applications

Tested applications:	ELISA, WB, IHC
Species specificity:	Human, Mouse, Rat; other species not tested.
Calculated Gamma adaptin MW:	825aa, 92 kDa
Observed Gamma adaptin MW:	91 kDa
Positive WB detected in	HEK-293 cells, mouse skeletal muscle tissue
Positive IHC detected in	Human pancreas cancer tissue
Recommended dilution:	WB: 1:500-1:5000 IHC: 1:20-1:200

Application key: WB = Western blotting, IHC = Immunohistochemistry, IF = Immunofluorescence, IP = Immunoprecipitation

Immunogen information

Immunogen:	Ag3696
GenBank accession number:	BC036283
Gene ID (NCBI):	164
Full name:	Adaptor-related protein complex 1, gamma 1 subunit

Product information

Purification method:	Antigen affinity purification
Storage:	PBS with 0.02% sodium azide and 50% glycerol pH 7.3. Store at -20°C.