

Cathepsin H Polyclonal Antibody

Catalog number: 10315-1-AP

Size: 35 µg/150 µl

Source: Rabbit

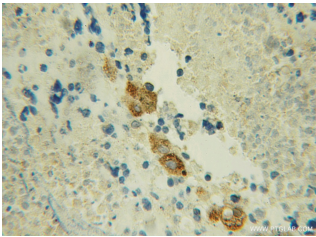
Isotype: IgG

Synonyms:

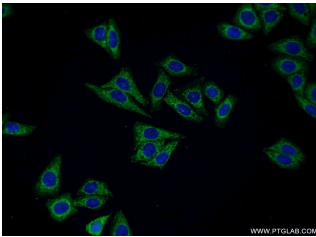
CTSH; ACC 4, ACC 5, Cathepsin

H, CPSB, CTSH,

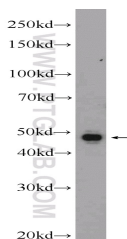
DKFZp686B24257, minichain



Immunohistochemical of paraffin-embedded human lung cancer using 10315-1-AP (CTSH antibody) at dilution of 1:50 (under 10x lens)



Immunofluorescent analysis of HepG2 cells using 10315-1-AP (CTSH Antibody) at dilution of 1:50 and Alexa Fluor 488-conjugated AffiniPure Goat Anti-Rabbit IgG(H+L)



SH-SY5Y cells were subjected to SDS PAGE followed by western blot with 10315-1-AP (CTSH Antibody) at dilution of 1:600

Background

Cathepsin H (CTSH, synonyms: CPSB, MGC1519, minichain) is a lysosomal cysteine proteinase important in the overall degradation of lysosomal proteins. It is composed of a dimer of disulfide-linked heavy and light chains, both produced from a single protein precursor. This protein, which belongs to the peptidase C1 protein family, can act both as an aminopeptidase and as an endopeptidase. Increased expression of this gene has been correlated with malignant progression of prostate tumors.

Applications

Tested applications:	ELISA, IHC, WB, IF
Cited applications:	IHC
Species specificity:	Human, Mouse, Rat; other species not tested.
Cited species:	Human
Calculated Cathepsin H MW:	41 kDa or 28 kDa
Observed Cathepsin H MW:	41 kDa
Positive WB detected in	SH-SY5Y cells, HepG2 cells, human lung tissue
Positive IHC detected in	Human lung cancer tissue
Positive IF detected in	HepG2 cells
Recommended dilution:	WB: 1:200-1:2000 IHC: 1:20-1:200 IF: 1:20-1:200

Application key: WB = Western blotting, IHC = Immunohistochemistry, IF = Immunofluorescence, IP = Immunoprecipitation

Immunogen information

Immunogen:	Ag0361
GenBank accession number:	BC002479
Gene ID (NCBI):	1512
Full name:	Cathepsin H

Product information

Purification method:	Antigen affinity purification
Storage:	PBS with 0.1% sodium azide and 50% glycerol pH 7.3. Store at -20°C.