

## NDUFAF2 Polyclonal Antibody

Catalog number: 13891-1-AP

Size: 20 µg/150 µl

Source: Rabbit

Isotype: IgG

Synonyms:

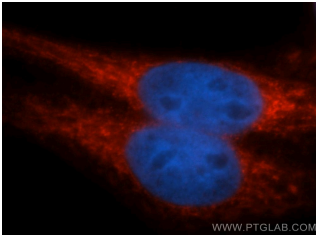
NDUFAF2; B17.2 like, B17.2L,

FLJ22398, mimitin, Mimitin,

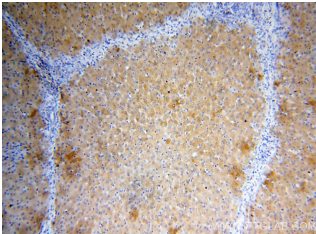
mitochondrial, MMTN,

NDUFA12 like protein,

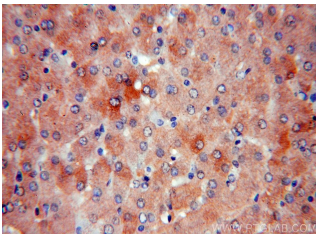
NDUFA12L, NDUFAF2



Immunofluorescent analysis of HepG2 cells, using 13891-1-AP and Rhodamine-labeled goat anti-rabbit IgG (red). Blue pseudocolor = DAPI (fluorescent DNA dye).



Immunohistochemical of paraffin-embedded human liver using 13891-1-AP (NDUFAF2 antibody) at dilution of 1:100 (under 10x lens)



Immunohistochemical of paraffin-embedded human liver using 13891-1-AP (NDUFAF2 antibody) at dilution of 1:100 (under 40x lens)

### Background

Mimitin, also named as MMTN, B17.2L, NDUFAF2 and NDUFA12L, is a small mitochondrial protein upregulated by proinflammatory cytokines at the transcriptional and protein levels. It is reported as a possible chaperone for assembly of mitochondrial complex I. The MW of Mimitin is 17-25 kDa.

### Applications

<b>Tested applications:</b>	ELISA, WB, IHC, IF, IP
<b>Cited applications:</b>	WB
<b>Species specificity:</b>	Human, Mouse, Rat; other species not tested.
<b>Cited species:</b>	Human
<b>Calculated NDUFAF2 MW:</b>	169aa, 20 kDa
<b>Observed NDUFAF2 MW:</b>	25 kDa
<b>Positive WB detected in</b>	HepG2 cells, HeLa cells, mouse skeletal muscle tissue, SH-SY5Y cells
<b>Positive IP detected in</b>	SH-SY5Y cells
<b>Positive IHC detected in</b>	Human liver tissue, human skeletal muscle tissue
<b>Positive IF detected in</b>	HepG2 cells
<b>Recommended dilution:</b>	WB: 1:500-1:5000 IP: 1:200-1:2000 IHC: 1:20-1:200 IF: 1:20-1:200

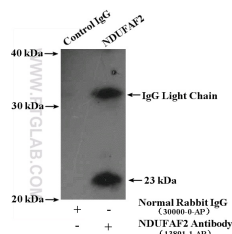
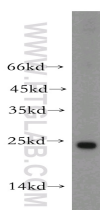
Application key: WB = Western blotting, IHC = Immunohistochemistry, IF = Immunofluorescence, IP = Immunoprecipitation

### Immunogen information

<b>Immunogen:</b>	Ag4853
<b>GenBank accession number:</b>	BC033965
<b>Gene ID (NCBI):</b>	91942
<b>Full name:</b>	NADH dehydrogenase (ubiquinone) 1 alpha subcomplex, assembly factor 2

### Product information

<b>Purification method:</b>	Antigen affinity purification
<b>Storage:</b>	PBS with 0.02% sodium azide and 50% glycerol pH 7.3. Store at -20°C.



HepG2 cells were subjected to IP Result of anti-NDUFAF2  
SDS PAGE followed by (IP:13891-1-AP, 4ug;  
western blot with 13891-1- AP(NDUFAF2 antibody) at Detection:13891-1-AP 1:500)  
dilution of 1:800 with SH-SY5Y cells lysate  
1600ug.