

DDI1 Polyclonal Antibody

Catalog number: 13968-1-AP

Size: 43 µg/150 µl

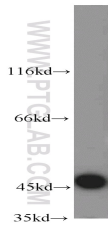
Source: Rabbit

Isotype: IgG

Synonyms:

DDI1; DDI1, FLJ36017, Protein

DDI1 homolog 1



mouse testis tissue were subjected to SDS PAGE followed by western blot with 13968-1-AP(DDI1 antibody) at dilution of 1:1000

Background

Ddi1(DNA-damage inducible 1) appears to release substrate from an ubiquitination complex, making the substrate available for deubiquitination to facilitate proteasomal degradation. Ddi1 could be a potential selective target for lung cancer treatment. Ddi1 runs as a doublet of 54/56 kDa on acrylamide gels besides the calculated MW 44 kDa.

Applications

Tested applications:	ELISA, WB
Species specificity:	Human,Mouse,Rat; other species not tested.
Calculated DDI1 MW:	44 kDa
Observed DDI1 MW:	47kDa, 56 kDa
Positive WB detected in	Mouse testis tissue, U-937 cells
Recommended dilution:	WB: 1:500-1:5000

Application key: WB = Western blotting, IHC = Immunohistochemistry, IF = Immunofluorescence, IP = Immunoprecipitation

Immunogen information

Immunogen:	Ag4992
GenBank accession number:	BC022017
Gene ID (NCBI):	414301
Full name:	DDI1, DNA-damage inducible 1, homolog 1 (S. cerevisiae)

Product information

Purification method:	Antigen affinity purification
Storage:	PBS with 0.02% sodium azide and 50% glycerol pH 7.3. Store at -20°C.