

RFC2 Polyclonal Antibody

Catalog number: 10410-1-AP

Size: 20 µg/150 µl

Source: Rabbit

Isotype: IgG

Synonyms:

RFC2; A1, A1 40 kDa subunit,

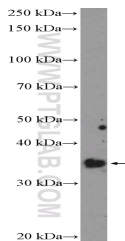
Activator 1 40 kDa subunit,

Activator 1 subunit 2,

Replication factor C subunit 2,

RF C 40 kDa subunit, RFC2,

RFC40



PC-3 cells were subjected to SDS PAGE followed by western blot with 10410-1-AP (RFC2 Antibody) at dilution of 1:300

Background

RFC2, also named as RFC40, belongs to the activator 1 small subunits family. It is a 40kd Activator 1 subunit. It binds ATP. The elongation of primed DNA templates by DNA polymerase delta and epsilon requires the action of the accessory proteins proliferating cell nuclear antigen (PCNA) and activator 1. RFC2 is a constitutively expressed protein essential for both DNA repair and replication. (PMID: 20660762).

Applications

Tested applications:	ELISA, WB
Cited applications:	WB
Species specificity:	Human, Mouse, Rat; other species not tested.
Cited species:	Mouse
Calculated RFC2 MW:	40 kDa
Observed RFC2 MW:	35-40 kDa
Positive WB detected in	PC-3 cells, HeLa cells, MCF-7 cells, Raji cells
Recommended dilution:	WB: 1:200-1:1000

Application key: WB = Western blotting, IHC = Immunohistochemistry, IF = Immunofluorescence, IP = Immunoprecipitation

Immunogen information

Immunogen:	Ag0663
GenBank accession number:	BC002813
Gene ID (NCBI):	5982
Full name:	Replication factor C (activator 1) 2, 40kDa

Product information

Purification method:	Antigen affinity purification
Storage:	PBS with 0.1% sodium azide and 50% glycerol pH 7.3. Store at -20°C.