

Myelin basic protein Polyclonal Antibody

Catalog number: 10458-1-AP

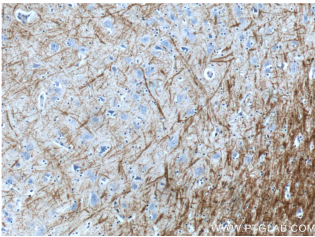
Size: 75 µg/150 µl

Source: Rabbit

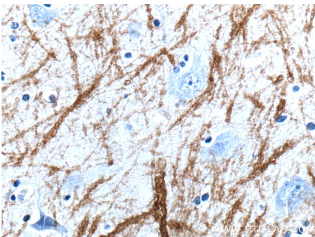
Isotype: IgG

Synonyms:

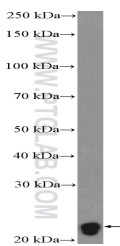
MBP; MBP, Myelin A1 protein,
Myelin basic protein



Immunohistochemistry of paraffin-embedded human brain tissue slide using 10458-1-AP (MBP Antibody) at dilution of 1:200 (under 10x lens).



Immunohistochemistry of paraffin-embedded human brain tissue slide using 10458-1-AP (MBP Antibody) at dilution of 1:200 (under 40x lens).



mouse brain tissue were subjected to SDS PAGE followed by western blot with 10458-1-AP (MBP Antibody) at dilution of 1:3000

Background

MBP belongs to the myelin basic protein family. The classic group of MBP isoforms (isoform 4-isoform 14) are the most abundant protein components of the myelin membrane in the CNS. They have a role in both its formation and stabilization. The smaller isoforms might have an important role in remyelination of denuded axons in multiple sclerosis. The non-classic group of MBP isoforms (isoform 1-isoform 3/Golli-MBPs) may preferentially have a role in the early developing brain long before myelination, maybe as components of transcriptional complexes, and may also be involved in signaling pathways in T-cells and neural cells. This is a rabbit polyclonal antibody raised against the full-length of human MBP, and is capable of recognizing multiple isoforms of MBP.

Applications

Tested applications:	ELISA, WB, IHC
Species specificity:	Human, Mouse, Rat; other species not tested.
Calculated Myelin basic protein MW:	33 kDa
Observed Myelin basic protein MW:	17-22 kDa
Positive WB detected in	Mouse brain tissue
Positive IHC detected in	Human brain tissue, human gliomas tissue
Recommended dilution:	WB: 1:1000-1:10000 IHC: 1:50-1:500

Application key: WB = Western blotting, IHC = Immunohistochemistry, IF = Immunofluorescence, IP = Immunoprecipitation

Immunogen information

Immunogen:	Ag0713
GenBank accession number:	BC008749
Gene ID (NCBI):	4155
Full name:	Myelin basic protein

Product information

Purification method:	Antigen affinity purification
Storage:	PBS with 0.1% sodium azide and 50% glycerol pH 7.3. Store at -20°C.