

IL36RN Polyclonal Antibody

Catalog number: 13113-1-AP

Size: 37 µg/150 µl

Source: Rabbit

Isotype: IgG

Synonyms:

IL1F5; FIL1, FIL1 delta,

FIL1(Delta), FIL1D, IL 1 delta,

IL 1 related protein 3, IL 1F5, IL

1HY1, IL 1L1, IL 1ra homolog 1,

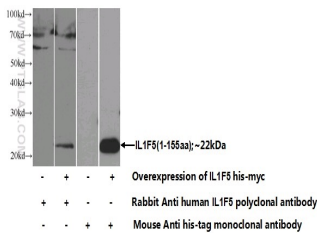
IL 1RP3, IL1F5, IL1HY1, IL1L1,

IL1RP3, Interleukin 1 delta,

Interleukin 1 family member 5,

Interleukin 1 HY1, Interleukin 1

like protein 1



Transfected HEK-293 cells were subjected to SDS PAGE followed by western blot with 13113-1-AP(IL1F5 Antibody) at dilution of 1:1000

Background

IL36RN is a member of the interleukin 1 cytokine family. This cytokine was shown to specifically inhibit the activation of NF-kappaB induced by interleukin 1 family, member 6 (IL1F6). It inhibits the activity of interleukin-36 (IL36A,IL36B and IL36G) by binding to receptor IL1RL2 and preventing its association with the coreceptor IL1RAP for signaling.

Applications

Tested applications:	ELISA, WB
Species specificity:	Human; other species not tested.
Calculated IL36RN MW:	155aa,17 kDa
Observed IL36RN MW:	
Positive WB detected in	Transfected HEK-293 cells
Recommended dilution:	WB: 1:500-1:5000

Application key: WB = Western blotting, IHC= Immunohistochemistry, IF = Immunofluorescence, IP = Immunoprecipitation

Immunogen information

Immunogen:	Ag3780
GenBank accession number:	BC024747
Gene ID (NCBI):	26525
Full name:	Interleukin 1 family, member 5 (delta)

Product information

Purification method:	Antigen affinity purification
Storage:	PBS with 0.1% sodium azide and 50% glycerol pH 7.3. Store at -20°C.