

## Endothelin 1 Polyclonal Antibody

Catalog number: 12191-1-AP

Size: 28 µg/150 µl

Source: Rabbit

Isotype: IgG

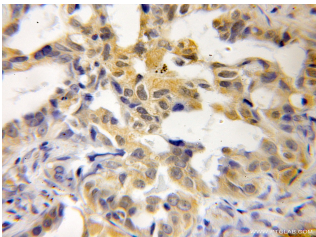
Synonyms:

EDN1; EDN1, endothelin 1, ET

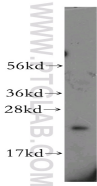
1 Big endothelin 1, ET1,

HDLCQ7, PPET1,

Preproendothelin 1



Immunohistochemical of paraffin-embedded human lung cancer using 12191-1-AP(EDN1 antibody) at dilution of 1:50 (under 25x lens)



human ileum tissue were subjected to SDS PAGE followed by western blot with 12191-1-AP(EDN1 antibody) at dilution of 1:400

### Background

EDN1, also named as Endothelin-1, PPET1 and ET-1, belongs to the endothelin/sarafotoxin family. Endothelins are endothelium-derived vasoconstrictor peptides. Emerging basic science, and animal and human data all suggest that EDN1 is a potentially important contributor in the pathobiology of fibrosing disorders, including those that affect the lung(PMID:20055532 ).

### Applications

Tested applications: ELISA, WB, IHC

Cited applications: IP, WB

Species specificity: Human; other species not tested.

Cited species: Human

Calculated Endothelin 1 MW: 212aa,24 kDa

Observed Endothelin 1 MW: 24 kDa

Positive WB detected in Human ileum tissue, SGC-7901 cells

Positive IHC detected in Human lung cancer tissue

Recommended dilution: WB: 1:200-1:2000

IHC: 1:20-1:200

Application key: WB = Western blotting, IHC = Immunohistochemistry, IF = Immunofluorescence, IP = Immunoprecipitation

### Immunogen information

Immunogen: Ag2847

GenBank accession number: BC009720

Gene ID (NCBI): 1906

Full name: Endothelin 1

### Product information

Purification method: Antigen affinity purification

Storage: PBS with 0.1% sodium azide and 50% glycerol pH 7.3. Store at -20°C.