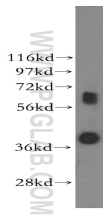
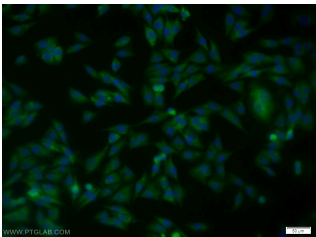


## SPRY2 Polyclonal Antibody

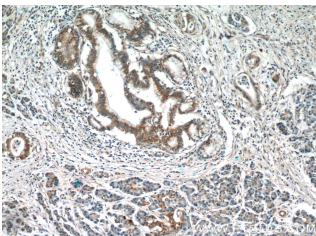
Catalog number: 11383-1-AP  
Size: 65 µg/150 µl  
Source: Rabbit  
Isotype: IgG  
Synonyms:  
SPRY2; hSPRY2, Protein  
sprouty homolog 2, sprouty  
homolog 2 (Drosophila), Spry 2,  
SPRY2



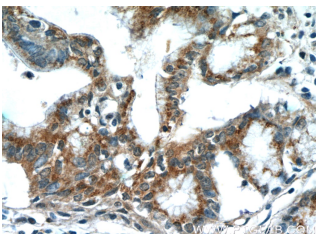
human duodenum tissue were subjected to SDS PAGE followed by western blot with 11383-1-AP(SPRY2 antibody) at dilution of 1:500



Immunofluorescent analysis of A375 cells using 11383-1-AP( SPRY2 Antibody) at dilution of 1:25 and Alexa Fluor 488-conjugated AffiniPure Goat Anti-Rabbit IgG(H+L)



Immunohistochemistry of paraffin-embedded human pancreas cancer tissue slide using 11383-1-AP( SPRY2 Antibody) at dilution of 1:50 (under 10x lens)



### Background

Sprouty(SPRY) genes encode intracellular inhibitors of receptor tyrosine kinase (RTK) signaling pathways, including those triggered by fibroblast growth factors (Fgfs). In addition to its well-reported function as an inhibitor of the RAS/RAF/MEK signalling cascade, SPRY2 exerts its inhibitory role in the PI3K/AKT signalling pathway through PTEN, and inhibits ERK/MAPK activity via EGFR trafficking.

### Applications

<b>Tested applications:</b>	ELISA, WB, IHC, IF
<b>Species specificity:</b>	Human, Mouse, Rat; other species not tested.
<b>Calculated SPRY2 MW:</b>	35 kDa
<b>Observed SPRY2 MW:</b>	39kd+60~65kd
<b>Positive WB detected in</b>	Human duodenum tissue, A375 cells
<b>Positive IHC detected in</b>	Human pancreas cancer tissue
<b>Positive IF detected in</b>	A375 cells
<b>Recommended dilution:</b>	WB: 1:200-1:2000 IHC: 1:20-1:200 IF: 1:10-1:100

Application key: WB = Western blotting, IHC = Immunohistochemistry, IF = Immunofluorescence, IP = Immunoprecipitation

### Immunogen information

<b>Immunogen:</b>	Ag1918
<b>GenBank accession number:</b>	BC015745
<b>Gene ID (NCBI):</b>	10253
<b>Full name:</b>	Sprouty homolog 2 (Drosophila)

### Product information

<b>Purification method:</b>	Antigen affinity purification
<b>Storage:</b>	PBS with 0.1% sodium azide and 50% glycerol pH 7.3. Store at -20°C.

**Immunohistochemistry of  
paraffin-embedded human  
pancreas cancer tissue slide  
using 11383-1-AP( SPRY2  
Antibody) at dilution of 1:50  
(under 40x lens)**