

## MOCS2 Polyclonal Antibody

Catalog number: 14416-1-AP

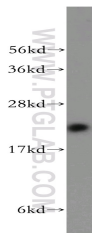
Size: 25 µg/150 µl

Source: Rabbit

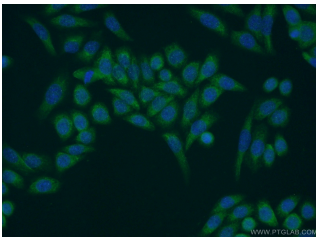
Isotype: IgG

Synonyms:

MOCS2; MCBPE, MOCO1,  
MOCO1 A, MOCS2, MOCS2A,  
MOCS2B, MPTS, Sulfur carrier  
protein MOCS2A



Jurkat cells were subjected to SDS PAGE followed by western blot with 14416-1-AP(MOCS2 antibody) at dilution of 1:200



Immunofluorescent analysis of HeLa cells using 14416-1-AP( MOCS2 Antibody) at dilution of 1:50 and Alexa Fluor 488-conjugated AffiniPure Goat Anti-Rabbit IgG(H+L)

### Applications

Tested applications:	ELISA, WB, IF
Species specificity:	Human,Mouse,Rat; other species not tested.
Calculated MOCS2 MW:	21 kDa
Observed MOCS2 MW:	21 kDa
Positive WB detected in	Jurkat cells, HeLa cells, human liver tissue, mouse heart tissue
Positive IF detected in	HeLa cells
Recommended dilution:	WB: 1:200-1:2000 IF: 1:20-1:200

Application key: WB = Western blotting, IHC = Immunohistochemistry, IF = Immunofluorescence, IP = Immunoprecipitation

### Immunogen information

Immunogen:	Ag5761
GenBank accession number:	BC046097
Gene ID (NCBI):	4338
Full name:	Molybdenum cofactor synthesis 2

### Product information

Purification method:	Antigen affinity purification
Storage:	PBS with 0.02% sodium azide and 50% glycerol pH 7.3. Store at -20°C.