

ICT1 Polyclonal Antibody

Catalog number: 10403-1-AP

Size: 30 µg/150 µl

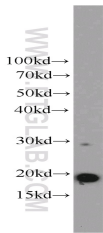
Source: Rabbit

Isotype: IgG

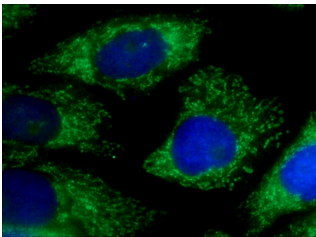
Synonyms:

ICT1; Digestion subtraction 1,

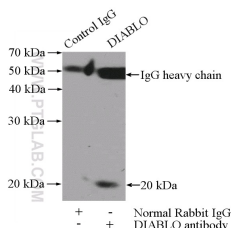
DS 1, DS1, ICT1



A2780 cells were subjected to SDS PAGE followed by western blot with 10403-1-AP (ICT1 antibody) at dilution of 1:600



Immunofluorescent analysis of HeLa cells using 10403-1-AP (ICT1 Antibody) at dilution of 1:25 and Alexa Fluor 488-conjugated AffiniPure Goat Anti-Rabbit IgG(H+L)



IP Result of anti-ICT1 (IP:10403-1-AP, 4ug; Detection:10403-1-AP 1:300) with SKOV-3 cells lysate 2000ug.

Background

The adult colon epithelium contains 3 differentiated cell types that arise from a multipotent stem cell. Deviation from the normal maturation pathway by neoplastic transformation is thought to initiate in stem cells or their early descendants. One potential marker is immature colon carcinoma transcript 1 (ICT1, synonym: DS-1) whose mRNA and protein were more highly expressed in undifferentiated than in differentiated cells. This antibody is a rabbit polyclonal antibody raised against a full-length human ICT1 protein

Applications

Tested applications:	ELISA, WB, IF, IP
Cited applications:	WB
Species specificity:	Human, Mouse, Rat; other species not tested.
Cited species:	Human
Calculated ICT1 MW:	24 kDa
Observed ICT1 MW:	19-24kd
Positive WB detected in	A2780 cells, SKOV-3 cells
Positive IP detected in	SKOV-3 cells
Positive IF detected in	HeLa cells
Recommended dilution:	WB: 1:200-1:2000 IP: 1:200-1:1000 IF: 1:10-1:100

Application key: WB = Western blotting, IHC = Immunohistochemistry, IF = Immunofluorescence, IP = Immunoprecipitation

Immunogen information

Immunogen:	Ag0647
GenBank accession number:	BC015335
Gene ID (NCBI):	3396
Full name:	Immature colon carcinoma transcript 1

Product information

Purification method:	Antigen affinity purification
Storage:	PBS with 0.1% sodium azide and 50% glycerol pH 7.3. Store at -20°C.