

SETD8 PolyAb Antibody

Catalog number: 14063-1-AP

Size: 20 µg/150 µl

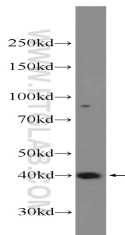
Source: Rabbit

Isotype: IgG

Synonyms:

SETD8; KMT5A; PR-Set7;

SET07; SET8



RAW 264.7 cells were subjected to SDS PAGE followed by western blot with 14063-1-AP(SETD8 Antibody) at dilution of 1:600

Applications

Tested applications:	ELISA, WB
Species specificity:	Human, Mouse; other species not tested.
Positive WB detected in:	RAW 264.7 cells
Calculated SETD8 MW:	43kd
Observed SETD8 MW:	40 kDa
Recommended dilution:	WB: 1:200-1:2000

Application key: WB = Western blotting, IHC = Immunohistochemistry, IF = Immunofluorescence, IP = Immunoprecipitation, FC = Flow cytometry

Immunogen information

Immunogen:	Ag5114
GenBank accession number:	BC050346
Gene ID (NCBI):	387893
Full name:	SET domain containing (lysine methyltransferase) 8

Product information

Purification method:	Antigen affinity purification
Storage:	PBS with 0.1% sodium azide and 50% glycerol pH 7.3. Store at -20°C.