

PSMA1 Polyclonal Antibody

Catalog number: 11175-1-AP

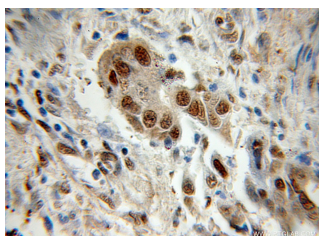
Size: 24 µg/150 µl

Source: Rabbit

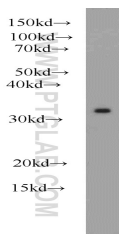
Isotype: IgG

Synonyms:

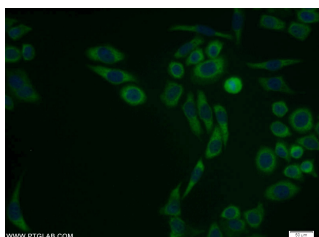
PSMA1; 20S proteasome, 30 kDa prosomal protein, HC2, Macropain subunit C2, NU, PROS 30, PROS30, Proteasome component C2, Proteasome nu chain, PSC2, PSMA1



Immunohistochemical of paraffin-embedded human colon cancer using 11175-1-AP(PSMA1 antibody) at dilution of 1:50 (under 10x lens)



COLO 320 cells were subjected to SDS PAGE followed by western blot with 11175-1-AP(PSMA1 antibody) at dilution of 1:600



Immunofluorescent analysis of PC-3 cells using 11175-1-AP (PSMA1 Antibody) at dilution of 1:25 and Alexa Fluor 488-conjugated AffiniPure Goat Anti-Rabbit IgG(H+L)

Background

PSMA1(Proteasome subunit alpha type-1) is also named as HC2, NU, PROS30, PSC2 and belongs to the peptidase T1A family. The proteasome is a multicatalytic proteinase complex which is characterized by its ability to cleave peptides with Arg, Phe, Tyr, Leu, and Glu adjacent to the leaving group at neutral or slightly basic pH. It is induced in breast cancer tissue and up-regulated in liver tumor tissues(PMID:17127214;16317774;17004105).

Applications

Tested applications:	ELISA, WB, IHC, IF
Species specificity:	Human, Mouse, Rat; other species not tested.
Calculated PSMA1 MW:	30 kDa
Observed PSMA1 MW:	29-33 kDa
Positive WB detected in	COLO 320 cells, HeLa cells, mouse kidney tissue, PC-3 cells
Positive IHC detected in	Human colon cancer tissue
Positive IF detected in	PC-3 cells
Recommended dilution:	WB: 1:200-1:2000 IHC: 1:20-1:200 IF: 1:10-1:100

Application key: WB = Western blotting, IHC = Immunohistochemistry, IF = Immunofluorescence, IP = Immunoprecipitation

Immunogen information

Immunogen:	Ag1660
GenBank accession number:	BC015105
Gene ID (NCBI):	5682
Full name:	Proteasome (prosome, macropain) subunit, alpha type, 1

Product information

Purification method:	Antigen affinity purification
Storage:	PBS with 0.1% sodium azide and 50% glycerol pH 7.3. Store at -20°C.