

ITM2C Polyclonal Antibody

Catalog number: 13601-1-AP

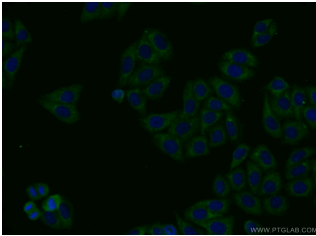
Size: 29 µg/150 µl

Source: Rabbit

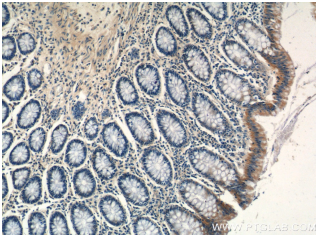
Isotype: IgG

Synonyms:

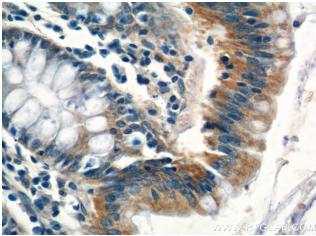
ITM2C; BRI3, BRICD2C,
Cerebral protein 14, E25, E25C,
integral membrane protein 2C,
ITM2C, ITM3, PSEC0047,
Transmembrane protein BRI3



Immunofluorescent analysis of HepG2 cells using 13601-1-AP (ITM2C Antibody) at dilution of 1:50 and Alexa Fluor 488-conjugated AffiniPure Goat Anti-Rabbit IgG(H+L)



Immunohistochemistry of paraffin-embedded human colon tissue slide using 13601-1-AP (ITM2C Antibody) at dilution of 1:50 (under 10x lens)



Immunohistochemistry of paraffin-embedded human colon tissue slide using 13601-1-AP (ITM2C Antibody) at dilution of 1:50 (under 40x lens)

Background

The Integral membrane protein 2C (ITM2C) is a type II integral transmembrane protein belonging to a family composed of at least two other members, ITM2A and ITM2B. ITM2C, often called transmembrane protein BRI3, is highly expressed in brain tissue. Yeast two-hybrid screen system revealed that BRI3 could interact with beta-secretase beta-amyloid protein converting enzyme (BACE)1 and the microtubule-destabilizing protein SCG10 (STMN2). It may play a role in TNF-induced cell death and neuronal differentiation. BRI3 was found to inhibit the various processing of amyloid precursor protein (APP) by blocking the access of alpha- and beta-secretases to APP, competitive inhibition of APP processing by BRI3 may provide a new approach to Alzheimer disease (AD) therapy and prevention.

Applications

Tested applications:	ELISA, WB, IHC
Species specificity:	Human; other species not tested.
Calculated ITM2C MW:	230aa,26 kDa;267aa,30 kDa
Observed ITM2C MW:	30 kDa
Positive WB detected in	Transfected HEK-293 cells
Positive IHC detected in	Human colon tissue
Recommended dilution:	WB: 1:500-1:5000 IHC: 1:20-1:200

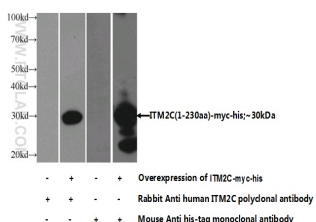
Application key: WB = Western blotting, IHC = Immunohistochemistry, IF = Immunofluorescence, IP = Immunoprecipitation

Immunogen information

Immunogen:	Ag3876
GenBank accession number:	BC025742
Gene ID (NCBI):	81618
Full name:	Integral membrane protein 2C

Product information

Purification method:	Antigen affinity purification
Storage:	PBS with 0.1% sodium azide and 50% glycerol pH 7.3. Store at -20°C.



Transfected HEK-293 cells
were subjected to SDS PAGE
followed by western blot with
13601-1-AP(ITM2C Antibody)
at dilution of 1:1000