

IFT20 Polyclonal Antibody

Catalog number: 13615-1-AP

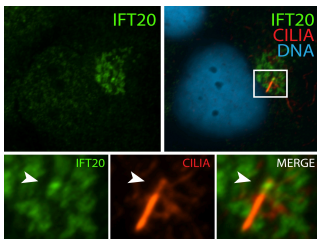
Size: 33 µg/150 µl

Source: Rabbit

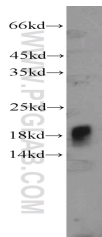
Isotype: IgG

Synonyms:

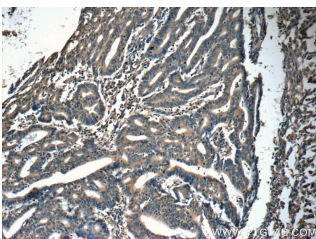
IFT20; hIFT20, IFT20



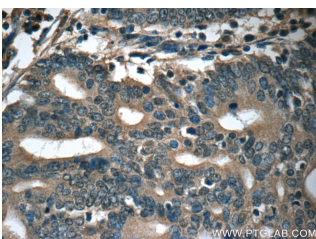
IF result (localization to Golgi-like structures) of anti-IFT20 (13615-1-AP, 1:50) with serum-starved hTERT-RPE1 (MoTH fixed) by Dr. Moshe Kim.



mouse pancreas tissue were subjected to SDS PAGE followed by western blot with 13615-1-AP(IFT20 antibody) at dilution of 1:400



Immunohistochemistry of paraffin-embedded human endometrial cancer tissue slide using 13615-1-AP(IFT20 Antibody) at dilution of 1:50 (under 10x lens)



Immunohistochemistry of paraffin-embedded human endometrial cancer tissue slide using 13615-1-AP(IFT20

Background

Intraflagellar transport (IFT), mediated by molecular motors and IFT particles, is an important transport process that occurs in the cilium. IFT particles are multi-subunit complexes that are made up of complex A and complex B. IFT20 is a component of IFT complex B and involved in ciliary process assembly. It is associated with the Golgi complex and plays a role in the trafficking of ciliary membrane proteins from the Golgi complex to the cilium.

Applications

Tested applications:	ELISA, IF, WB, IP, IHC
Cited applications:	IF, WB
Species specificity:	Human, Mouse; other species not tested.
Cited species:	Human, mouse, zebrafish
Calculated IFT20 MW:	15 kDaa
Observed IFT20 MW:	15-18 kDa
Positive WB detected in	Mouse pancreas tissue, HEK-293 cells, mouse kidney tissue, mouse lung tissue
Positive IP detected in	Mouse testis tissue
Positive IHC detected in	Human endometrial cancer tissue
Positive IF detected in	HTERT-RPE1 cells
Recommended dilution:	WB: 1:200-1:1000 IP: 1:200-1:2000 IHC: 1:20-1:200 IF: 1:20-1:200

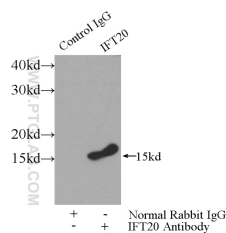
Application key: WB = Western blotting, IHC = Immunohistochemistry, IF = Immunofluorescence, IP = Immunoprecipitation

Immunogen information

Immunogen:	Ag4521
GenBank accession number:	BC038094
Gene ID (NCBI):	90410
Full name:	Intraflagellar transport 20 homolog (Chlamydomonas)

Product information

Purification method:	Antigen affinity purification
Storage:	PBS with 0.02% sodium azide and 50% glycerol pH 7.3. Store at -20°C.



IP Result of anti-IFT20 (IP:13615-1-AP, 3µg; Detection:13615-1-AP 1:700) with mouse testis tissue lysate

Antibody) at dilution of 1:50 4000ug.
(under 40x lens)