

KCNS2 Polyclonal Antibody

Catalog number: 13443-1-AP

Size: 30 µg/150 µl

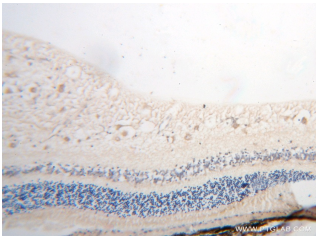
Source: Rabbit

Isotype: IgG

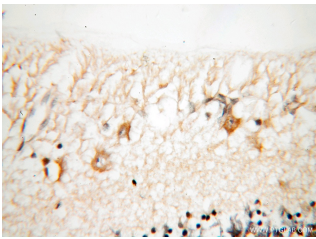
Synonyms:

KCNS2; KCNS2, KIAA1144,

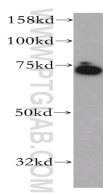
KV9.2



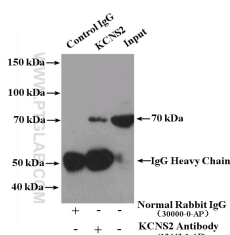
Immunohistochemical of paraffin-embedded human eye using 13443-1-AP(KCNS2 antibody) at dilution of 1:100 (under 10x lens)



Immunohistochemical of paraffin-embedded human eye using 13443-1-AP(KCNS2 antibody) at dilution of 1:100 (under 40x lens)



Y79 cells were subjected to SDS PAGE followed by western blot with 13443-1-AP(KCNS2 antibody) at dilution of 1:300



IP Result of anti-KCNS2

(IP:13443-1-AP, 4µg;

Detection:13443-1-AP 1:300)

Applications

Tested applications:	ELISA, WB, IHC, IP
Species specificity:	Human, Mouse, Rat; other species not tested.
Calculated KCNS2 MW:	477aa, 54 kDa
Observed KCNS2 MW:	65-70 kDa
Positive WB detected in:	Y79 cells, HepG2 cells, mouse brain tissue
Positive IP detected in:	HepG2 cells
Positive IHC detected in:	Human eye tissue
Recommended dilution:	WB: 1:500-1:5000
	IP: 1:200-1:1000
	IHC: 1:20-1:200

Application key: WB = Western blotting, IHC = Immunohistochemistry, IF = Immunofluorescence, IP = Immunoprecipitation

Immunogen information

Immunogen:	Ag4271
GenBank accession number:	BC027932
Gene ID (NCBI):	3788
Full name:	Potassium voltage-gated channel, delayed-rectifier, subfamily S, member 2

Product information

Purification method:	Antigen affinity purification
Storage:	PBS with 0.02% sodium azide and 50% glycerol pH 7.3. Store at -20°C.

with HepG2 cells lysate
3400ug.