

## TSLP Polyclonal Antibody

Catalog number: 13778-1-AP

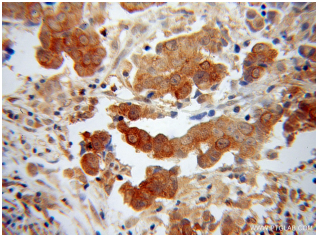
Size: 20 µg/150 µl

Source: Rabbit

Isotype: IgG

Synonyms:

TSLP;



Immunohistochemistry of paraffin-embedded human prostate cancer using 13778-1-AP (TSLP Antibody) at Dilution 1:50 (under 40x lens)

### Applications

Tested applications:	ELISA, IHC
Species specificity:	Human; other species not tested.
Calculated TSLP MW:	15kd,42kd
Observed TSLP MW:	
Positive IHC detected in:	Human prostate cancer
Recommended dilution:	IHC: 1:20-1:200

Application key: WB = Western blotting, IHC = Immunohistochemistry, IF = Immunofluorescence, IP = Immunoprecipitation, FC = Flow cytometry

### Immunogen information

Immunogen:	Ag4771
GenBank accession number:	BC016720
Gene ID (NCBI):	85480
Full name:	Thymic stromal lymphopoietin

### Product information

Purification method:	Antigen affinity purification
Storage:	PBS with 0.02% sodium azide and 50% glycerol pH 7.3. Store at -20°C.