

Hephaestin Polyclonal Antibody

Catalog number: 11148-1-AP

Size: 25 µg/150 µl

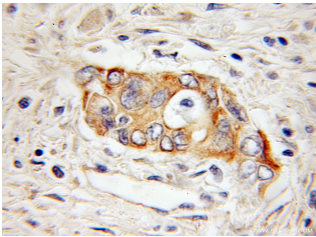
Source: Rabbit

Isotype: IgG

Synonyms:

HEPH; CPL, HEPH, Hephaestin,

KIAA0698



Immunohistochemical of paraffin-embedded human pancreas cancer using 11148-1-AP (HEPH antibody) at dilution of 1:50 (under 10x lens)

Background

Hephaestin, also named as KIAA0698, belongs to the multicopper oxidase family. It is provided as ferroxidase of cellular iron export. HEPH is implicated in iron homeostasis and may mediate iron efflux associated to ferroportin 1. HEPH is active in placenta but may not play a key role in placental iron transport.

Applications

Tested applications:	ELISA, IHC
Cited applications:	WB
Species specificity:	Human, Mouse, Rat; other species not tested.
Cited species:	Human
Calculated Hephaestin MW:	130 kDa
Observed Hephaestin MW:	
Positive IHC detected in	Human pancreas cancer tissue
Recommended dilution:	IHC: 1:20-1:200

Application key: WB = Western blotting, IHC = Immunohistochemistry, IF = Immunofluorescence, IP = Immunoprecipitation

Immunogen information

Immunogen:	Ag1604
GenBank accession number:	BC011561
Gene ID (NCBI):	9843
Full name:	Hephaestin

Product information

Purification method:	Antigen affinity purification
Storage:	PBS with 0.1% sodium azide and 50% glycerol pH 7.3. Store at -20°C.