

## CYP2S1 Polyclonal Antibody

Catalog number: 13654-1-AP

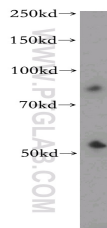
Size: 32 µg/150 µl

Source: Rabbit

Isotype: IgG

Synonyms:

CYP2S1;



mouse lung tissue were subjected to SDS PAGE followed by western blot with 13654-1-AP(CYP2S1 Antibody) at dilution of 1:800

### Applications

|                          |                                              |
|--------------------------|----------------------------------------------|
| Tested applications:     | ELISA, WB                                    |
| Species specificity:     | Human, mouse, rat; other species not tested. |
| Positive WB detected in: | Mouse lung tissue, mouse skin tissue         |
| Calculated CYP2S1 MW:    | 504aa,56kd                                   |
| Observed CYP2S1 MW:      | 50-56kd                                      |
| Recommended dilution:    | WB: 1:200-1:2000                             |

Application key: WB = Western blotting, IHC = Immunohistochemistry, IF = Immunofluorescence, IP = Immunoprecipitation, FC = Flow cytometry

### Immunogen information

|                           |                                                       |
|---------------------------|-------------------------------------------------------|
| Immunogen:                | Ag4320                                                |
| GenBank accession number: | BC033691                                              |
| Gene ID (NCBI):           | 29785                                                 |
| Full name:                | Cytochrome P450, family 2, subfamily S, polypeptide 1 |

### Product information

|                      |                                                                      |
|----------------------|----------------------------------------------------------------------|
| Purification method: | Antigen affinity purification                                        |
| Storage:             | PBS with 0.02% sodium azide and 50% glycerol pH 7.3. Store at -20°C. |